



SPRAT: A spatially-explicit marine ecosystem model based on population balance equations



Arne N. Johanson^{a,b,*}, Andreas Oschlies^a, Wilhelm Hasselbring^b, Boris Worm^c

^a GEOMAR Helmholtz Centre for Ocean Research, Düsternbrooker Weg 20, 24105 Kiel, Germany

^b Kiel University, Department of Computer Science, 24098 Kiel, Germany

^c Dalhousie University, Biology Department, Halifax, NS, Canada B3H 4R2

ARTICLE INFO

Article history:

Received 10 July 2016

Received in revised form 7 January 2017

Accepted 19 January 2017

Keywords:

End-to-end modeling

Population balance equation

Fish stock prediction

Ecosystem-based management

ABSTRACT

To successfully manage marine fisheries using an ecosystem-based approach, long-term predictions of fish stock development considering changing environmental conditions are necessary. Such predictions can be provided by end-to-end ecosystem models, which couple existing physical and biogeochemical ocean models with newly developed spatially-explicit fish stock models. Typically, individual-based models (IBMs) and models based on advection-diffusion-reaction (ADR) equations are employed for the fish stock models. In this paper, we present a novel fish stock model called SPRAT for end-to-end ecosystem modeling based on population balance equations (PBEs) that combines the advantages of IBMs and ADR models while avoiding their main drawbacks. SPRAT accomplishes this by describing the modeled ecosystem processes from the perspective of individuals while still being based on partial differential equations.

We apply the SPRAT model to explore a well-documented regime shift observed on the eastern Scotian Shelf in the 1990s from a cod-dominated to a herring-dominated ecosystem. Model simulations are able to reconcile the observed multitrophic dynamics with documented changes in both fishing pressure and water temperature, followed by a predator–prey reversal that may have impeded recovery of depleted cod stocks.

We conclude that our model can be used to generate new hypotheses and test ideas about spatially interacting fish populations, and their joint responses to both environmental and fisheries forcing.

© 2017 Elsevier B.V. All rights reserved.

1. Introduction

Living marine resources and their exploitation by fisheries play an important role in sustaining global nutrition but many of the world's fish stocks are in poor condition due to overharvesting (Worm et al., 2009; Costello et al., 2016). This reduces the productivity of the stocks significantly and necessitates improved management in order to achieve a sustainable use of global fisheries resources.

Fishing, however, is not the only impact on the condition and productivity of fish stocks but long- and short-term variability of environmental parameters due to climate change or other sources of variability (such as the North Atlantic Oscillation (NAO)) imposes

additional pressures (Brander, 2007). The effects of changes in the environment on fish can be direct (e.g., by altering individual growth rates) or indirect (by affecting the net primary productivity and, thus, the carrying capacity of the ecosystem). Sometimes, these factors may interact with anthropogenic influences in complex ways. For example, the expansion of oxygen minimum zones in the tropical northeast Atlantic Ocean due to climate change compresses the suitable habitat of pelagic predator fish to a narrow surface layer and, thus, increases their vulnerability to surface fishing gear (Stramma et al., 2012). The resulting high catch rates in such areas can lead to overly optimistic estimates of species abundance and, therefore, to exaggerated fishing quotas that put the affected stocks in danger of overexploitation.

Another case illustrating the complexities of how fishing and climate can interact in driven rapid ecosystem change is the recent overfishing of Atlantic cod (*Gadus morhua*) stocks in the Gulf of Maine that occurred despite stringent management practises. Here, retrospective analysis showed that this change can in large part be attributed to rapid ocean warming that has led to an unrecognized effects on recruitment and mortality, and indirectly

* Corresponding author at: GEOMAR Helmholtz Centre for Ocean Research, Düsternbrooker Weg 20, 24105 Kiel, Germany.

E-mail addresses: arj@informatik.uni-kiel.de (A.N. Johanson), aoschlies@geomar.de (A. Oschlies), wha@informatik.uni-kiel.de (W. Hasselbring), bworm@dal.ca (B. Worm).

rendered fisheries exploitation rates unsustainable (Pershing et al., 2015).

From such examples, it becomes apparent that fisheries management must address the effects of fishing and climate variability and change in a joined framework, accounting for the effects of different sources of mortality, including changes in natural mortality, predation, and fishing (Rose et al., 2010). Thus a more holistic ecosystem-based approach has been called for, which may focus on marine ecosystems as a whole and takes into account the interdependence of their components (Cury et al., 2008).

Ecological models that can supply this kind of information are sometimes called *end-to-end models* because they incorporate all ecosystem components from the dynamics of the abiotic environment to primary producers to top predators (Travers et al., 2007). In such models, the different elements of the ecosystem are linked together mainly through trophic interactions—i.e., by feeding (Moloney et al., 2011). Ideally, all these links between components are modeled bidirectionally (e.g., an increase in fish biomass due to feeding on zooplankton is also reflected in a decrease of zooplankton biomass). Such a two-way coupling of model elements allows to explicitly resolve at the same time both bottom-up and top-down mechanisms of ecological control. It is the combination of modeling these bidirectional links in the trophic structure and considering the dynamics of the environment that enables end-to-end models to provide long-term predictions on the development of fisheries ecosystems under environmental change. In the context of ecosystem-based fisheries management, these predictive capabilities can be used to evaluate different management scenarios with regard to their long-term effectiveness (Stock et al., 2011).

In practice, end-to-end models are typically constructed by using an existing physical and biogeochemical ocean model (for the abiotic environment as well as for nutrient and plankton dynamics) and creating a spatially-explicit fish model that can be coupled with the ocean model (Shin et al., 2010). In this context, fisheries are usually included in the model by assuming a mortality rate due to fishing (constant or changing with time), which applies homogeneously to the fish population beyond a certain lower size limit. Implementing a complete end-to-end model from scratch is discouraged by the amount of effort that is needed for developing sophisticated physical and biogeochemical models.

The most widely used fish models for end-to-end modeling are either individual-based models (IBMs), such as OSMOSE (Shin and Cury, 2001), or models based on advection–diffusion–reaction (ADR) equations, such as SEA-PODYM (Bertignac et al., 1998; Lehodey et al., 2013). IBMs offer the advantage that they are relatively easy to parametrize as their parameters are typically observable in individual fish. Additionally, these models can easily feature an emergent, dynamic food web structure. However, since—at the ocean scale—it is not feasible to simulate all individual fish of the study region, so-called *super individual* approximations of IBMs are employed (Scheffer et al., 1995). With this approach, individuals that share similar characteristics are replaced by a so-called *super individual*—i.e., an individual that has parameters similar to those of the individuals it represents plus an additional parameter that describes the number of individuals it stands for. This approximation technique is problematic because there is no mathematical framework for IBMs that would allow to formally study how many super-individuals are necessary to simulate the inter-individual interactions with sufficient accuracy.

Since ADR models are based on partial differential equations (PDEs), they integrate well with existing biogeochemical ocean models and feature a rigid mathematical framework with established approximation techniques for which formal error bounds can be described. Furthermore, ADR equations are derived from

the principle of mass conservation and are, thus, well-suited for studying mass fluxes in marine ecosystems. However, ADR models can be difficult to parametrize because most of their parameters are usually *not* observable in individual fish and the full life cycle of the fish species is not directly represented in their main equation (only discrete age classes can be modeled).

In order to combine the advantages of IBMs and ADR models and to prevent their main drawbacks, we propose a fish model for end-to-end modeling that is based on so-called population balance equations (PBEs) (Ramkrishna, 2000). Our PBE model—which is called *SPRAT*—represents fish as density distributions on a combined continuous space–body size domain. Since PBEs are based on differential equations, they share the advantages of ADR models with regard to the integration with existing biogeochemical ocean models and to the existence of established approximation techniques. At the same time, PBE models share the distinct advantage of IBMs that most of their parameters can directly be observed in individual fish and that food web structure emerges dynamically from the model.

Potential drawbacks introduced by our PBE-based model *SPRAT* in comparison to IBMs and ADR models include:

- 1 Since we represent fish as density distributions we cannot track fish and their interactions down to the level of single individuals (as it would be possible with an IBM *not* using the super individual approximation).
- 2 In comparison to ADR models, the *SPRAT* model is associated with increased computational costs because PBE models represent the size of individuals as an additional dimension of the domain of a PDE.

For a more detailed comparison of the PBE approach with IBMs and ADR models refer to Johanson (2016, Chap. 10).

The PBE approach to fish stock modeling is similar to so-called size spectra models, which also describe fish via distribution functions on a continuous body size domain (see, e.g., Carozza et al., 2016; Andersen and Beyer, 2006; Maury and Poggiale, 2013). In the context of size spectra models, however, space is typically not resolved in the deduction of the models and is only introduced later on by assigning an instance of the respective model to each box or grid point of a discretized spatial grid (hence these models could be characterized as replicated one-dimensional or univariate PBE models). An exception to this is the APECOSM model by Maury (2010), which is designed to study apex predators (namely tuna). APECOSM is a spatially-continuous, mass-balanced size spectrum model that, like *SPRAT*, offers a unified continuous description of fish in both space and body size via a single distribution function. Hence, *SPRAT* could also be described as a spatially-continuous size spectrum model. Despite the strong similarities between these approaches, we prefer to call *SPRAT* a PBE model to highlight that *SPRAT* is derived from a model type which is widely applied in engineering and has a large body of research associated with it (especially regarding fast discretization techniques; see, e.g., Le Borne and Shahmuradyan, 2016).

In this paper, we apply *SPRAT* to simulate and mechanistically explore the complex interactions between the different components of the eastern Scotian Shelf ecosystem, specifically plankton and fish populations, fisheries and climate. The *SPRAT* model was implemented using a software engineering approach of the same name, which we presented earlier (Johanson et al., 2016; Johanson and Hasselbring, 2014a,b).

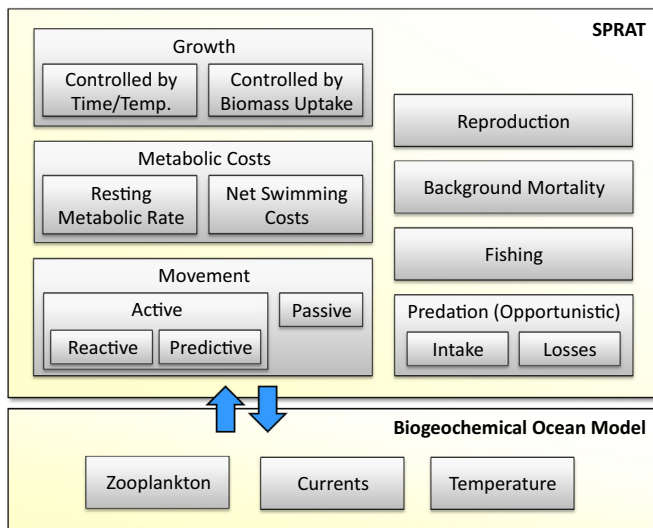


Fig. 1. Conceptual diagram of the SPRAT model.

2. Material and methods

2.1. Model description

Before describing the SPRAT model in detail, we first give a conceptual overview of the model, loosely following the ODD (Overview, Design concepts, Details) protocol by Grimm et al. (2006), which was designed as a standard protocol for describing IBMs.

2.1.1. Overview

Purpose. The main goal in the development of SPRAT is to construct a fish stock prediction model for end-to-end modeling which can represent fish in a completely continuous, rigorous mathematical framework and at the same time is still formulated from the perspective of the individual fish to allow for a dynamic food web structure. The aim of this specific study is to employ SPRAT to simulate and explore a well-documented regime shift on the eastern Scotian Shelf in the 1990s from a mainly cod-dominated to a herring-dominated ecosystem (Section 2.2).

State variables and scales. In our baseline simulation, we include five state variables: nutrient (N), phytoplankton (P), and zooplankton (Z) concentrations as well as mass distributions of two fish species complexes (predator and prey species representing mainly cod and herring). All state variables vary in time and space (two spatial dimensions representing the vertically-integrated ocean). The two fish mass distributions furthermore vary in an additional body size dimension. The N , P , and Z variables are modeled discretely in space and continuously in time. The fish mass distributions are modeled continuously in *all* dimensions.

The vertically-integrated ocean region of the eastern Scotian Shelf is assumed to be a homogeneous $450 \times 450 \text{ km}^2$. For approximating the solution of our PDE-based model, this space is discretized into 48×48 equally-sized rectangular cells. The size dimension is divided into 32 cells using logarithmically distributed division points. The model is integrated in time from the year 1970 till 2010 with a time step of about 1 h.

Process overview. An overview of the processes resolved by our model is given in Fig. 1. SPRAT is loosely based on dynamic energy budget models, which model the flow of energy or biomass through the ecosystem (see, e.g., Maury and Poggiale, 2013). The most important pathways in such models are predation, metabolic costs (resting metabolic rate and locomotion), structural growth, reproduction, and mortality (esp. due to fishing). Where

applicable, we model these processes to be dependent on temperature because of the major significance of this variable for controlling metabolic rates (Clarke and Johnston, 1999). In general, we include ocean currents into SPRAT but ignore them for the Scotian Shelf scenario because we make the simplifying assumption of space being homogeneous (see Section 2.3).

Our fish stock model is coupled bi-directionally with a simple, spatially-explicit NPZ model. The NPZ model resolves only one class of phytoplankton and zooplankton, each. SPRAT and the NPZ model are linked via the Z state variable: when fish feed on zooplankton, the corresponding amount of biomass is transferred from the zooplankton state variable to the fish mass distribution.

2.1.2. Design concepts

Mass conservation. In the absence of sources and sinks, such as zooplankton grazing and fishing, the SPRAT model is mass-conserving: the overall biomass in the system stays constant over time (the term *Population Balance Equation* refers to the fact that the overall population mass may be distributed differently but, in total, stays in balance over time).

Emergence. The evolution of the fish density distributions is described from the perspective of the individual fish and no fixed food web structure is prescribed. This implies that most of the parameters of SPRAT can be observed in individual fish and that the trophic structure of the ecosystem emerges dynamically from the model.

Interaction. In SPRAT, fish interact with each other mainly through feeding on each other. In particular, the fish seek out locations, where the concentration of potential prey is high.

Sensing. We model fish to have perfect information about their environment within a certain radius. In particular, we assume that they are able to assess, in which direction the maximum prey concentration lies within their radius of perfect information.

Prediction. If prey abundance levels fall below a certain level within the radius of perfect information, predatory fish will apply simple strategies (swim in a fixed direction) to find more suitable feeding grounds.

Stochasticity. SPRAT is completely deterministic.

Details. In the SPRAT model, fish of species $\kappa = 1, \dots, n$ are represented by the average carbon mass distribution

$$m^{[\kappa]} : [0, t_{\max}] \times \Omega \rightarrow \mathbb{R}, \quad (t, x, y, r) \mapsto m^{[\kappa]}(t, x, y, r) \quad (1)$$

with the combined space-size domain

$$\Omega = \Omega_S \times [r_{\min}, r_{\max}]. \quad (2)$$

Here, $t_{\max} \in \mathbb{R}_{>0}$ describes an arbitrary time limit for the model, Ω_S is a two-dimensional polygon domain representing the vertically integrated ocean, and r_{\min} and r_{\max} are the minimal and maximum carbon content masses of individual fish in the model, respectively. With carbon mass, we refer to the absolute mass of the carbon content of the dry mass of fish (both the mass distribution $m^{[\kappa]}$ and the body size dimension r are carbon masses). By speaking of *average* carbon mass, we mean that for any volume $V \subset \Omega$, the carbon mass of species κ contained in that volume is given by $\int_V m^{[\kappa]}(t, x, y, r) d(x, y, r)$. The unit of $m^{[\kappa]}$ is $\text{kg C m}^{-2} (\text{kg C})^{-1} = \text{m}^{-2}$. Note that the model uses a continuous size dimension instead of discrete size classes as often found in fish models used for end-to-end modeling purposes (e.g., Radtke et al., 2013; Fulton et al., 2011; Megrey et al., 2007). Tables B.5 and B.6 in Appendix B provide an overview of all parameters of SPRAT.

Fig. 2 provides a conceptual visualization of the distribution functions described by Eq. (1). For each fish species κ , at every point (x, y) of the spatial domain (i.e., the vertically-integrated ocean), there is a one-dimensional distribution of fish biomass along the body size dimension. This one-dimensional distribution describes

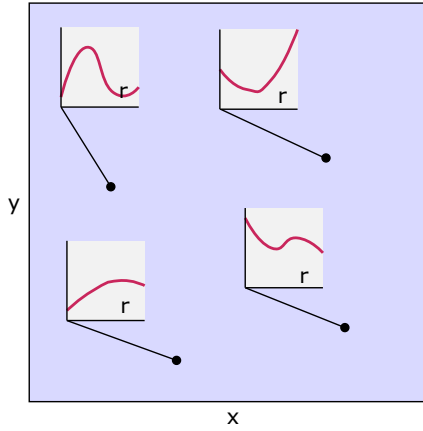


Fig. 2. Conceptual visualization of the fish mass distributions in SPRAT. At each spatial point (x, y) , there is a one-dimensional biomass distribution along the size dimension r .

how much mass $m^{[\kappa]}(t, x, y, r)$ of individuals of a certain mass r there is in the system, at the current point in time t .

Our model assumes constant ratios for carbon mass to dry mass ($C_{C/d}^{[\kappa]}$) and dry mass to wet mass ($C_{d/w}^{[\kappa]}$) for each species. For convenience, we define $M^{[\kappa]}$ to denote the wet mass distribution of species κ and $u^{[\kappa]}$ to denote the average individual count density of the respective species.

The evolution of the distributions $m^{[\kappa]}$ is governed by the following system of mass-conserving population balance equations:

$$\frac{\partial}{\partial t} m^{[\kappa]} + \frac{\partial}{\partial x} q_x^{[\kappa]} m^{[\kappa]} + \frac{\partial}{\partial y} q_y^{[\kappa]} m^{[\kappa]} + \frac{\partial}{\partial r} g^{[\kappa]} m^{[\kappa]} = H^{[\kappa]}. \quad (3)$$

The vector $q^{[\kappa]} = (q_x^{[\kappa]}, q_y^{[\kappa]})$ is the spatial advection velocity of species κ with unit $m s^{-1}$, $g^{[\kappa]}$ is a growth rate with unit $kg C s^{-1}$, and $H^{[\kappa]}$ is a source term with unit $kg C m^{-2} (kg C)^{-1} s^{-1} = m^{-2} s^{-1}$. The spatial derivatives (∂_x and ∂_y) describe the transport of fish in space with velocity $q^{[\kappa]}$ (due to both passive advection by currents and due to active locomotion). Correspondingly, the derivative in the size dimension (∂_r) describes growth with the dynamic growth rate $g^{[\kappa]}$. The source term $H^{[\kappa]}$ expresses how fish biomass is introduced to and removed from the system. In particular, the source term handles fishing as well as the mass re-distribution occurring during feeding and reproduction.

In the following sections, we specify the functional forms of the terms in Eq. (3) to include the concepts shown in the overview of the SPRAT model in Fig. 1.

2.1.3. Length–weight relationship

In some contexts, we need the lengths of individuals instead of their weight. To convert wet mass M (in kg) to length l (in m), we use the power law

$$M = a^{[\kappa]} l^{b^{[\kappa]}}, \quad (4)$$

which implies that

$$l = \left(\frac{M}{a^{[\kappa]}} \right)^{1/b^{[\kappa]}}. \quad (5)$$

2.1.4. Life stages

Although our model represents fish size using a continuous dimension, we need to differentiate between different life stages, each with its specific characteristics. For example, fish are only able to reproduce after they have reached maturity. Individuals transition from one life stage to the next once they grow past a certain size/mass.

In the following, we list the masses that mark transitions relevant in our model:

- $w_{\text{egg}}^{[\kappa]}$: dry weight of one egg from species κ .
- $w_{\text{forage}}^{[\kappa]}$: dry mass at which larvae of species κ start to forage on their own (prior to that point, the larvae feed on their yolk sac).
- $M_{\text{plankton}}^{[\kappa]}$: wet mass up to which individuals of species κ consume zooplankton.
- $M_{\text{mature}}^{[\kappa]}$: wet mass at maturity of species κ .
- $M_{\text{max}}^{[\kappa]}$: maximum wet weight of an individual from species κ .

2.1.5. Spatial velocity

The spatial transport velocity of fish from species κ is given by:

$$q^{[\kappa]} = \begin{cases} V_{\text{curr}} & \text{if } r < C_{C/d}^{[\kappa]} w_{\text{forage}}^{[\kappa]}, \\ V_{\text{curr}} + V_{\text{react}}^{[\kappa]} + V_{\text{pred}}^{[\kappa]} & \text{otherwise.} \end{cases} \quad (6)$$

For simplicity, we assume that fish which do not forage on their own have no active movement and are transported in space solely by currents (V_{curr} ; given by the ocean model SPRAT is coupled with). All other individuals are also affected by V_{curr} but exhibit two additional movement terms that together represent their active locomotion.

In modeling the active movement of individuals, we follow the approach of Fernö et al. (1998), who describe fish swimming as being governed by two processes (see also Neill, 1979). The first process is *reactive movement*, which means that the fish choose a swimming speed and direction based on their immediate surrounding. Thereby, they react to approaching predators, from which they flee, or to prey patches, by which they are attracted. The second process is *predictive movement*, which is based not on stimuli from the current environment of the fish but rather on their experience and their instinct (regarding learning in fish, see Brown et al., 2008). Examples of this second type of movement are feeding and spawning migrations.

Reactive movement can be modeled based on a *habitat index function* $\mathfrak{H}^{[\kappa]}$, which describes how favorable a location is to an individual fish (cf. Bertignac et al., 1998). Using the index function, the fish can be modeled as trying to locally maximize $\mathfrak{H}^{[\kappa]}$ by swimming in a certain direction.

In order to let the fish find the habitat that is locally optimal for them, it has been proposed (e.g., by Bertignac et al., 1998) to set reactive movement velocity proportional to the (spatial) gradient of the habitat index. We found that this optimization strategy is unsuitable for our model because it is too locally confined and produces large accumulations of fish in local maxima of $\mathfrak{H}^{[\kappa]}$ that are relatively inadequate compared to other close-by locations. Therefore, we choose to assume that fish have perfect information about their surroundings within a certain radius r_{view} and swim to an absolute maximum of $\mathfrak{H}^{[\kappa]}$ within this area.

The area of perfect information is given by

$$K(x, y) = \{(v, w) \in \mathbb{R}^2 : \|(v - x, w - y)\| \leq r_{\text{view}}\} \cap \Omega_S. \quad (7)$$

Within its bounds, we are looking for the spatial point with maximum habitat index and choose our swimming direction $\delta_o^{[\kappa]}(t, x, y, r)$ as

$$\delta_o^{[\kappa]} = (\arg \max_{(v, w) \in K(x, y)} \mathfrak{H}^{[\kappa]}(t, v, w, r)) - (x, y) \quad (8)$$

with

$$\mathfrak{H}^{[\kappa]} = C_{\text{prey}}^{[\kappa]}. \quad (9)$$

The problem of finding an absolute maximum in $K(x, y)$ is computationally feasible since all densities are discretized for

approximating the solution to Eq. (3) (hence, we need to check only a finite amount of points to find the desired maximum).

Finally, we can define the reactive movement velocity as proportional to $\delta_0^{[\kappa]}$ as

$$V_{\text{reactive}}^{[\kappa]} = \xi^{[\kappa]} \delta_0^{[\kappa]} \quad (10)$$

with

$$\xi^{[\kappa]} = \begin{cases} \frac{\zeta^{[\kappa]} I^{[\kappa]}(r)}{\|\delta_0^{[\kappa]}\|} & \text{if } \|\delta_0^{[\kappa]}\| > 0, \\ 0 & \text{otherwise,} \end{cases} \quad (11)$$

where $\zeta^{[\kappa]}$ is the cruise speed of fish from species κ in body length per second.

The fish in our model employ predictive movement strategies in two cases:

1. If prey abundance is too low within the radius of perfect information r_{view} to sustain the fish, they initiate a feeding migration until they find more suitable habitat.
2. During the mating season, fish travel to spawning grounds.

Therefore, we define a migration velocity which is composed of feeding and spawning migration:

$$V_{\text{migr}}^{[\kappa]} = V_{\text{feed}}^{[\kappa]} + V_{\text{spawn}}^{[\kappa]} \quad (12)$$

If there is no reactive movement (because no location within r_{view} has a higher habitat index than the current one) and there are more fish at the current location than can be sustained by the respective prey concentration, the fish have to migrate. This can be formalized as

$$V_{\text{feed}}^{[\kappa]} = \begin{cases} (1, 0) & \text{if } \|V_{\text{react}}^{[\kappa]}\| = 0 \wedge m^{[\kappa]} > \zeta_0 c_{\text{prey}}^{[\kappa]}, \\ 0 & \text{otherwise,} \end{cases} \quad (13)$$

where ζ_0 is a linear scaling constant. The movement strategy we employ for feeding migrations is simple: swim in the direction of the positive x axis (the swimming speed will be adjusted later on). A similarly simple strategy (“swim westwards”) has actually been observed in herring in the Norwegian Sea (Fernö et al., 1998). Of course, more sophisticated strategies can be used, such as swimming to known feeding locations etc.

For spawning migrations, we assume that there is a single spawning ground for each species given by its center $s^{[\kappa]} = (x_s^{[\kappa]}, y_s^{[\kappa]})$. Furthermore, a fixed mating season is described by the subset $S^{[\kappa]} \subset [0, 1]$, where the interval represents time of year (with 0 being the first moment and 1 the last moment of the year). We introduce the function $\theta(t) \in [0, 1]$ to convert simulation time t to time of year. With these prerequisites, the spawning migration velocity is given by

$$V_{\text{spawn}}^{[\kappa]} = \begin{cases} (x_s^{[\kappa]} - x, y_s^{[\kappa]} - y) & \text{if } \theta(t) \in S^{[\kappa]}, \\ 0 & \text{otherwise.} \end{cases} \quad (14)$$

This approach can, of course, be extended to multiple spawning areas represented by regions rather than by points, if necessary.

If there is a reason for the fish to migrate (i.e., $\|V_{\text{migr}}^{[\kappa]}\| > 0$), we use the predictive movement velocity to combine migratory and reactive movement:

$$V_{\text{pred}}^{[\kappa]} = \begin{cases} -V_{\text{react}}^{[\kappa]} + \zeta^{[\kappa]} I^{[\kappa]}(r) \frac{V_{\text{react}}^{[\kappa]} + V_{\text{migr}}^{[\kappa]}}{\|V_{\text{react}}^{[\kappa]} + V_{\text{migr}}^{[\kappa]}\|} & \text{if } \|V_{\text{migr}}^{[\kappa]}\| > 0 \wedge \|V_{\text{react}}^{[\kappa]} + V_{\text{migr}}^{[\kappa]}\| > 0, \\ 0 & \text{otherwise.} \end{cases} \quad (15)$$

2.1.6. Sources and sinks

The source term of the model is given by

$$H^{[\kappa]} = \begin{cases} -m^{[\kappa]} (H_{\text{fish}}^{[\kappa]} + H_{\text{bg}}^{[\kappa]}) + H_{\text{repr}}^{[\kappa]} + E^{[\kappa]} I^{[\kappa]} - L^{[\kappa]} - R^{[\kappa]} & \text{if } r \geq c_{\text{C/d}}^{[\kappa]} w_{\text{forage}}^{[\kappa]}, \\ -m^{[\kappa]} H_{\text{bg}}^{[\kappa]} + H_{\text{repr}}^{[\kappa]} - L^{[\kappa]} & \text{otherwise.} \end{cases} \quad (16)$$

For fish which are able to actively forage, the source term consists of losses due to fishing ($H_{\text{fish}}^{[\kappa]}$), background mortality ($H_{\text{bg}}^{[\kappa]}$), predation ($L^{[\kappa]}$), and respiratory costs $R^{[\kappa]}$. The intake of food from predation is described by the term $E^{[\kappa]} I^{[\kappa]}$, where $I^{[\kappa]}$ is the gross carbon mass intake and $E^{[\kappa]}$ is the assimilation efficiency. The redistribution of mass during reproduction (from mature individuals to eggs) is covered by $H_{\text{repr}}^{[\kappa]}$.

For very early life stages that cannot forage on their own, only background mortality, reproduction, and losses from predation have to be considered.

Fishing. Extraction of individuals due to fishing is described by an instantaneous fishing mortality rate which can vary depending on spatial location and fish size. For example, for the Scotian Shelf scenario discussed in this paper, $H_{\text{fish}}^{[\kappa]}$ is given by

$$H_{\text{fish}}^{[\kappa]}(t, x, y, r) = \begin{cases} F^{[\kappa]}(t) & \text{if } M^{[\kappa]} \geq \frac{1}{2} M_{\text{mature}}^{[\kappa]}, \\ 0 & \text{otherwise,} \end{cases} \quad (17)$$

where $F^{[\kappa]}(t)$ is the respective observed fishing mortality.

Background mortality. To account for losses of fish because of effects that are not explicitly considered in our model (such as predation by birds and marine mammals), we introduce the background mortality

$$H_{\text{bg}}^{[\kappa]} = \begin{cases} \varepsilon_B^{[\kappa]} m^{[\kappa]} & \text{if } M^{[\kappa]} > \frac{1}{4} M_{\text{mature}}^{[\kappa]}, \\ \varepsilon_B^{[\kappa]} m^{[\kappa]} - \zeta_B^{[\kappa]} \min(0, \Delta T(t)) & \text{otherwise.} \end{cases} \quad (18)$$

For all individual sizes, we apply a quadratic (with respect to mass) instantaneous death term with mortality rate $\varepsilon_B^{[\kappa]}$. Since earlier life stages are especially vulnerable to fluctuations in temperature, we include an additional linear death term for smaller individuals that depends on the deviation $\Delta T(t)$ from the average habitat temperature (see Houde, 2009).

Metabolic costs. Respiratory costs are given by

$$R^{[\kappa]} = \frac{m^{[\kappa]}}{r} (R_S^{[\kappa]} + R_A^{[\kappa]}) = u^{[\kappa]} (R_S^{[\kappa]} + R_A^{[\kappa]}), \quad (19)$$

where $R_S^{[\kappa]}$ is the SMR of an individual fish and $R_A^{[\kappa]}$ represents the additional respiratory costs due to swimming (net swimming costs). $R_A^{[\kappa]}$ corresponds to the active metabolic rate (AMR) minus the SMR.

According to Clarke and Johnston (1999), SMR is fitted well for many teleostei by

$$\text{SMR} = \frac{1}{5.43} M^{0.8} \quad (20)$$

with M being the wet mass of an individual in g and SMR in $\text{mmol O}_2 \text{ h}^{-1}$.

In order to convert oxygen consumption to carbon losses, we make use of the so-called respiratory quotient RQ, which describes the ratio of exhaled CO_2 volume to inhaled O_2 volume:

$$\text{RQ} = \frac{1 \text{ mol CO}_2}{1 \text{ mol O}_2}. \quad (21)$$

While the value of RQ depends on the diet, Videler (1993) determines

$$\text{RQ} = 0.96 \quad (22)$$

to be a good average value for fish. Therefore, it holds that

$$1 \text{ mmol O}_2 \text{ h}^{-1} = \frac{12}{0.96 \times 10^6 \times 60^2} \text{ kg C s}^{-1}. \quad (23)$$

By converting to appropriate units and compensating for temperature changes using a Q_{10} temperature coefficient, we define the SMR of an individual fish in our model as

$$R_S^{[\kappa]} = (Q_{10}^{\text{SMR}})^{\Delta T(t)/10} \frac{12}{5.43 \times 0.96 \times 10^6 \times 60^2} (10^3 M^{[\kappa]})^{0.8}. \quad (24)$$

Videler (1993) deems $Q_{10}^{\text{SMR}} = 2$ to be appropriate in the context of resting metabolic rates of fish.

Regarding the respiratory net costs of swimming, Boisclair and Tang (1993) as well as Ohlberger et al. (2005) propose a model of the form

$$\text{AMR} = \text{SMR} + aM^b v^c, \quad (25)$$

where M is wet mass in g, v is swimming speed in cm s^{-1} , and AMR is given in $\text{mg O}_2 \text{ h}^{-1}$. A parametrization of Eq. (25) for steady swimming in many fish is $a = 10^{-2.43}$, $b = 0.8$, and $c = 1.21$ (Boisclair and Tang, 1993). For determining v , we only have to consider the velocity due to active movement

$$V_{\text{active}}^{[\kappa]} = V_{\text{react}}^{[\kappa]} + V_{\text{pred}}^{[\kappa]}. \quad (26)$$

Applying appropriate unit conversions, we can define the net swimming costs per individual as:

$$R_A^{[\kappa]} = \frac{12 \times 10^{-2.43}}{0.96 \times 32 \times 10^6 \times 60^2} (10^3 M^{[\kappa]})^{0.8} (10^2 \|V_{\text{active}}^{[\kappa]}\|)^{1.21} \quad (27)$$

Reproduction. During the spawning season $S^{[\kappa]} \subset [0, 1]$, mass is transferred from mature female fish to (fertilized) eggs. We assume a constant 50%:50% sex ratio of females to males in the population. The net wet mass fecundity $\Phi^{[\kappa]}$ describes how many fertilized eggs per kg wet mass a mature female produces during the spawning season.

In order to describe the mass transfer process related to reproduction, we define the carbon mass at maturity

$$r_{\text{mature}}^{[\kappa]} = c_{\text{C/d}}^{[\kappa]} c_{\text{d/w}}^{[\kappa]} M_{\text{mature}}^{[\kappa]}, \quad (28)$$

the carbon mass of an egg

$$r_{\text{egg}}^{[\kappa]} = c_{\text{C/d}}^{[\kappa]} w_{\text{egg}}^{[\kappa]}, \quad (29)$$

and the duration of the spawning season of species κ in seconds

$$\theta_s^{[\kappa]} = 365 \times 24 \times 60^2 \times \int_0^1 1_{S^{[\kappa]}}(\phi) d\phi, \quad (30)$$

where $1_{S^{[\kappa]}}$ is the characteristic function on $S^{[\kappa]}$. This allows us to define the biomass spawning rate

$$B_s^{[\kappa]} = \begin{cases} \frac{1}{2} \frac{\Phi^{[\kappa]} r_{\text{egg}}^{[\kappa]}}{c_{\text{C/d}}^{[\kappa]} c_{\text{d/w}}^{[\kappa]} \theta_s^{[\kappa]}} m^{[\kappa]} & \text{if } \theta(t) \in S^{[\kappa]} \wedge r \geq r_{\text{mature}}^{[\kappa]}, \\ 0 & \text{otherwise,} \end{cases} \quad (31)$$

which describes the amount of egg biomass that is spawned at each moment of the spawning season (spawning is assumed to happen at a constant rate during the whole season).

In order to reintroduce the egg biomass into the distribution m at an appropriate “place” in the size dimension, we define an insertion distribution $\psi^{[\kappa]}(r)$ that only has a small support which is centered around $r_{\text{egg}}^{[\kappa]}$. We require $\psi^{[\kappa]} : [r_{\text{min}}, r_{\text{max}}] \rightarrow \mathbb{R}_{\geq 0}$ to be continuous and to fulfill

$$\arg \max_{\phi \in [r_{\text{min}}, r_{\text{max}}]} (\psi^{[\kappa]}(\phi)) = r_{\text{egg}}^{[\kappa]} \quad (32)$$

$$\wedge \int_{r_{\text{min}}}^{r_{\text{max}}} \psi^{[\kappa]}(\phi) d\phi = 1 \quad (33)$$

$$\wedge \psi^{[\kappa]}(r) = 0 \text{ for all } r \geq r_{\text{mature}}^{[\kappa]}. \quad (34)$$

The insertion distribution $\psi^{[\kappa]}(r)$ allows us to describe the redistribution of egg mass $H_{\text{repr}}^{[\kappa]}(t, x, y, r)$ as

$$H_{\text{repr}}^{[\kappa]} = \psi^{[\kappa]}(r) \int_{r_{\text{mature}}^{[\kappa]}}^{r_{\text{max}}} B_s^{[\kappa]}(t, x, y, \phi) d\phi - B_s^{[\kappa]}(t, x, y, r). \quad (35)$$

2.1.7. Predation

In this section, we describe the processes related to predation that determine the intake of biomass ($I^{[\kappa]}$), biomass losses due to predation ($L^{[\kappa]}$), and the grazing of zooplankton by fish (G). A key feature of marine food webs is opportunistic predation based on body size: fish tend to feed on organisms of all taxa, provided that the predator fish are physically able to ingest these organisms (Shin et al., 2010). Therefore, in ecological models of fish, it is typically assumed that a predator can prey on other fish as soon as the ratio of predator to prey body length is larger than the *minimal predator–prey mass ratio* τ (Shin and Cury, 2001).

The amount of prey of species κ that is available to a predator is given by

$$S_p^{[\kappa]}(t, x, y, r) = \int_{r_{\text{min}}}^{r/\tau} m^{[\kappa]}(t, x, y, \phi) d\phi. \quad (36)$$

Based on this, we define the auxiliary term

$$F_m^{[\kappa]}(t, x, y, r) = \eta^{[\kappa]} (Q_{10}^P)^{\Delta T(t)/10} c_{\text{C/d}}^{[\kappa]} c_{\text{d/w}}^{[\kappa]} \quad (37)$$

$$\cdot (M^{[\kappa]})^\alpha u^{[\kappa]} \frac{1}{F_0^{[\kappa]} + \sum_{i \neq \kappa} S_p^{[i]}} \quad (38)$$

to describe biomass intake as

$$I^{[\kappa]} = G^{[\kappa]} + \begin{cases} F_m^{[\kappa]} \sum_{i \neq \kappa} S_p^{[i]} & \text{if } r \geq c_{\text{C/d}}^{[\kappa]} w_{\text{forage}}^{[\kappa]}, \\ 0 & \text{otherwise.} \end{cases} \quad (39)$$

Biomass intake of fish that forage on their own consists of zooplankton grazing $G^{[\kappa]}$ (see below) and predation on fish from other species (in its current form, the model does not take into account cannibalism although it could be included). Predation on fish is modeled via a saturation response with the half saturation constant $F_0^{[\kappa]}$. $\eta^{[\kappa]}$ is the constant predation rate of species κ that is adjusted for temperature fluctuations by the temperature coefficient $Q_{10}^P = 2$. The allometric exponent α scales the influence of body mass on the predation rate and can be estimated to be about 0.74 for pelagic predator fish (Ware, 1978).

The biomass losses due to predation are given by

$$L^{[\kappa]} = m^{[\kappa]} \sum_{i \neq \kappa} \int_{\min(\max(\tau r, r_{\text{forage}}^{[i]}), r_{\text{max}})}^{r_{\text{max}}} F_m^{[i]}(t, x, y, \phi) d\phi \quad (40)$$

with $r_{\text{forage}}^{[i]} = c_{\text{C/d}}^{[i]} w_{\text{forage}}^{[i]}$. The complex expression for the lower integral boundary ensures that only predation by fish that are large enough (τr) and can forage on their own ($r_{\text{forage}}^{[i]}$) is considered. Additionally, the lower integral boundary must not exceed the overall maximum fish size r_{max} .

Regarding zooplankton grazing, we define an auxiliary term analogous to $F_m^{[\kappa]}$:

$$Z_m^{[\kappa]} = \mu^{[\kappa]} (Q_{10}^P)^{\Delta T(t)/10} c_{\text{C/d}}^{[\kappa]} c_{\text{d/w}}^{[\kappa]} (M^{[\kappa]})^\alpha u^{[\kappa]}, \quad (41)$$

where $\mu^{[k]}$ is the zooplankton grazing rate of species κ . Using it, we characterize zooplankton grazing by a saturating response

$$G^{[k]} = \begin{cases} Z_m^{[k]} \cdot \frac{K_Z(t, x, y) \cdot c_Z(t, x, y)}{Z_0^{[k]} + c_Z(t, x, y)} & \text{if } r \geq C_{c/d}^{[k]} w_{\text{forage}}^{[k]} \wedge M^{[k]} \leq M_{\text{plankton}}^{[k]}, \\ 0 & \text{otherwise} \end{cases} \quad (42)$$

with K_Z being a limiting factor, $Z_0^{[k]}$ the half saturation constant, and c_Z the local carbon mass concentration of zooplankton supplied by the biogeochemical model that SPRAT is coupled with. The limiting factor K_Z ensures that zooplankton cannot be depleted at arbitrarily high rates by depending on a linear zooplankton mortality rate ($j_f(Z)$) given by our Nutrient, Phytoplankton, Zooplankton (NPZ) model, which is described in Appendix A. K_Z is defined as

$$K_Z(t, x, y) = \min \left(1, \frac{\rho \cdot j_f(Z(t, x, y)) \cdot c_Z(t, x, y)}{k(t, x, y) + \varepsilon_Z} \right), \quad (43)$$

where ρ , j_f , and Z are from our NPZ model (see Appendix A). ε_Z can be set to prevent division by zero, and k is the (only theoretical) total unlimited zooplankton consumption by all species (compare the definitions of $G_{UL}^{[k]}$ and $G^{[k]}$):

$$k(t, x, y) = \sum_{\kappa=1}^n \int_{r_{\min}}^{r_{\max}} G_{UL}^{[k]}(t, x, y, \phi) \, d\phi \quad (44)$$

$$G_{UL}^{[k]} = \begin{cases} Z_m^{[k]} \cdot \frac{c_Z(t, x, y)}{Z_0^{[k]} + c_Z(t, x, y)} & \text{if } r \geq C_{c/d}^{[k]} w_{\text{forage}}^{[k]} \wedge M^{[k]} \leq M_{\text{plankton}}^{[k]}, \\ 0 & \text{otherwise} \end{cases} \quad (45)$$

In order to feed back the zooplankton consumption to the biogeochemical model, we define the total zooplankton consumption G :

$$G(t, x, y) = \sum_{\kappa=1}^n \int_{r_{\min}}^{r_{\max}} G^{[k]}(t, x, y, \phi) \, d\phi. \quad (46)$$

2.1.8. Growth

Somatic growth rate in kg s^{-1} is given by

$$g^{[k]} = \begin{cases} (Q_{10}^C)^{\Delta T(t)/10} \frac{\max(0, E^{[k]} I^{[k]} - R^{[k]})}{u^{[k]}} & \text{if } \frac{w_{\text{forage}}^{[k]}}{C_{d/w}^{[k]}} \leq M^{[k]} < M_{\text{max}}^{[k]}, \\ (Q_{10}^L)^{\Delta T(t)/10} \frac{C_{c/d}^{[k]} (w_{\text{forage}}^{[k]} - w_{\text{egg}}^{[k]})}{\theta_{\text{yolk}}^{[k]}} & \text{if } M^{[k]} < \frac{w_{\text{forage}}^{[k]}}{C_{d/w}^{[k]}}, \\ 0 & \text{otherwise.} \end{cases} \quad (47)$$

We distinguish three cases:

1. Fish that can forage on their own but have not yet reached their maximum weight.
2. Fish that cannot yet forage on their own.
3. Fish that have reached the maximum weight of their species.

In the first two cases, we compensate for temperature fluctuations by using Q_{10} temperature coefficients. For larvae/eggs, we employ $Q_{10}^L = 3$ and for further-developed individuals, $Q_{10}^C = 2$ (see Houde, 2009).

In the first case of individuals that forage on their own, $g^{[k]}$ describes the positive net biomass assimilation rate of all individuals at the corresponding coordinates divided by the number of individuals. Thereby, it expresses the biomass accumulation rate of a single individual. Since mass is the only attribute to track the developmental stage of individuals in our model, we can only allow for positive growth rates because, otherwise, adult fish could, for example, become larvae again (i.e., develop backwards in time).

In the second case of eggs/larvae that cannot (yet) forage on their own, we apply a constant growth rate (aside from the temperature dependency) to let them grow from $w_{\text{egg}}^{[k]}$ to $w_{\text{forage}}^{[k]}$ in time $\theta_{\text{yolk}}^{[k]}$. A

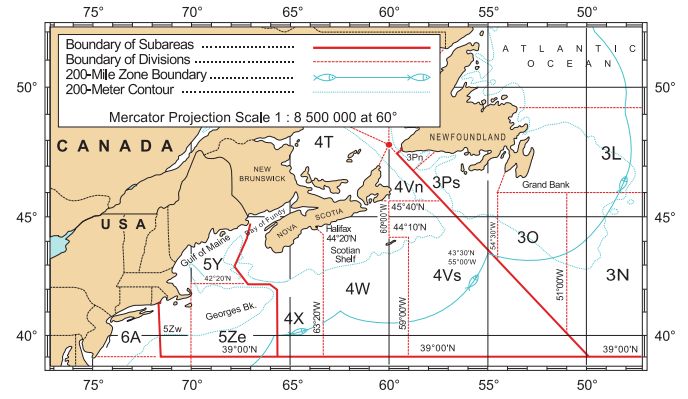


Fig. 3. Map of the study region (NAFO divisions 4Vn,s and 4W). Figure adapted from <http://www.nafo.int/about/frames/area.html>.

constant growth rate is assumed to be a reasonably good approximation of the exponential growth that fish experience during their very early life stages, in which they (exclusively) feed on their yolk sac.

One could argue, however, that eggs and larvae cannot accumulate mass as long as they do not take it up from their environment but from their yolk sac (the weight of which is already included in $w_{\text{egg}}^{[k]}$). Hence, it should hold that $w_{\text{egg}}^{[k]} = w_{\text{forage}}^{[k]}$. Since in our model we have to represent the aging process of eggs/larvae via changes in their mass (the model does not have an age dimension), we solve this problem pragmatically by letting $w_{\text{egg}}^{[k]}$ represent the lower end of the egg weight spectrum and $w_{\text{forage}}^{[k]}$ the upper end.

By transporting a constant amount of mass from $w_{\text{egg}}^{[k]}$ to $w_{\text{forage}}^{[k]}$, we also introduce a hidden death term since the same mass at $w_{\text{egg}}^{[k]}$ represents more individuals than at $w_{\text{forage}}^{[k]}$. This, however, does not have an effect on the mass conservation properties of the model.

Once the fish have reached their maximum mass in the third case of the definition of $g^{[k]}$, growth ceases.

2.2. Evaluation scenario: eastern Scotian Shelf

In order to evaluate SPRAT, we apply our model to explore observed fish stock dynamics on the eastern Scotian Shelf (Fig. 3) in the time period from 1970 to 2010.

In the early 1990s, the eastern Scotian Shelf ecosystem underwent a distinct regime shift from a dominance of benthic predatory fish to a dominance of planktivorous forage fish species (Frank et al., 2011). While benthic predators (predominantly Atlantic cod) declined, forage fish biomass (mainly herring *Clupea harengus*) increased by up to 900% between the year 1990 and 2000 (see Fig. 4). Frank et al. (2005) found evidence that this regime shift was associated with a trophic cascade affecting not only piscivorous and planktivorous fish but also zooplankton and phytoplankton at the base of the food web. Due to reduced predation from the benthic predator fish complex, the forage fish complex could thrive, increasing its zooplankton consumption, which in turn reduced phytoplankton mortality associated with zooplankton grazing. As can be seen from Fig. 5, large-bodied zooplankton declined during the 1990s, while phytoplankton concentration increased at the same time.

Even though a fishing moratorium for cod and haddock was implemented in 1993 (see cod fishing mortality in Fig. 6), the benthic predator stock complex did not show signs of recovery for over ten years. Only from 2006 on, the regime shift seems to have started reversing slowly across all four levels of the trophic cascade.

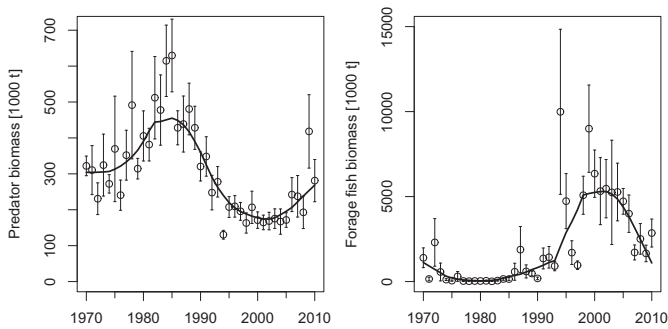


Fig. 4. Observed biomass of demersal predator and forage fish complexes as reported by Frank et al. (2011). The bold lines result from applying a 25% LOWESS filter.

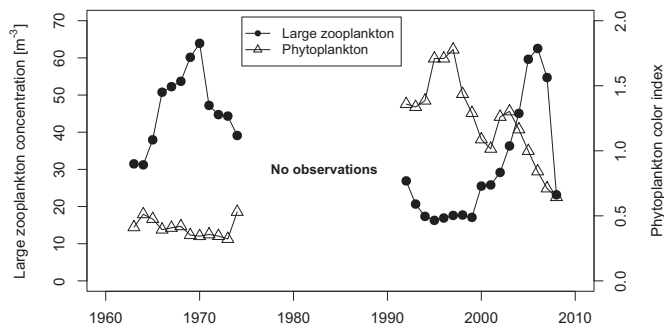


Fig. 5. Observed large-bodied zooplankton abundance and phytoplankton color index as reported by Frank et al. (2011).

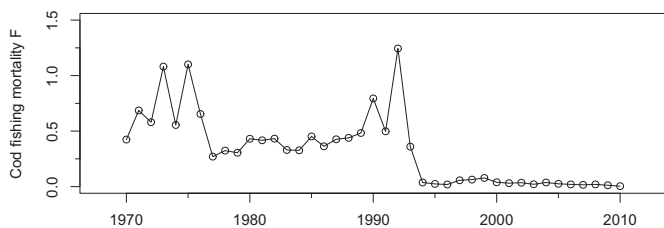


Fig. 6. Cod fishing mortality as reported by Frank et al. (2011).

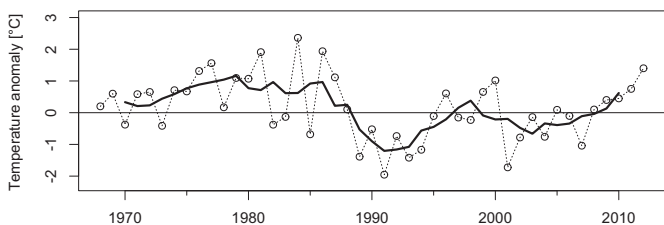


Fig. 7. Observed bottom water temperature anomaly. The bold line is a five-year running mean. For details on how the data was derived, see Section 2.3.

The occurrence of the shift itself is explained by most observers, such as Frank et al. (2011), as being caused by the intense fishing pressure on predator stocks prior to their collapse. Their findings suggest that environmental influences, such as the cooling of bottom waters (see Fig. 7), play only a minor role in driving the observed changes. While they recognize that the cooling is likely to have had a pronounced negative effect on benthic predator recruitment, their analysis indicates that this effect is dwarfed by the impacts of fishing.

The prolonged duration of the collapse of the predator fish complex despite the closure of fisheries has been primarily attributed to predator–prey reversal (Collie et al., 2013; Minto and Worm,

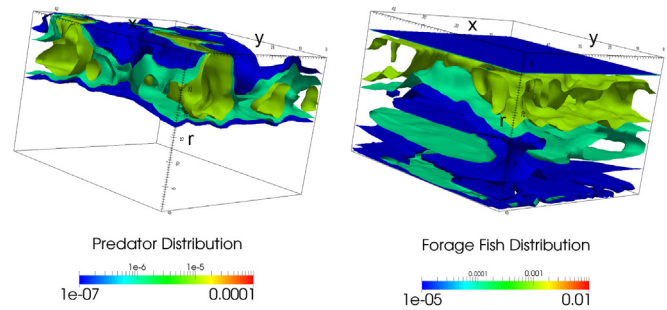


Fig. 8. Visualization of predator and forage fish carbon biomass distributions from model output using isosurfaces. Note that for clarity all mesh cells are depicted to be of equal size in this figure. The r -axis represents fish size and the unit of the scales is $\text{kg C m}^{-2} (\text{kg C})^{-1} = \text{m}^{-2}$.

2012). When the predator stocks declined, forage fish were released from predation and their biomass level increased rapidly. Abundant forage fish are thought to have then competed with or directly preyed upon the early life stages of predator stocks, depressing their recruitment.

An attempt at creating a model that can capture the fish stock dynamics described above was undertaken by Bundy (2005). She employed a mass-balance modeling approach using Ecopath with Ecosim (Christensen et al., 2005) to examine the trophic structure of the ecosystem prior and subsequent to the regime shift on the Scotian Shelf. Her model was able to reproduce the changes in the ecosystem structure during the regime shift but it offered little guidance for mechanistically explaining the main drivers that lead to the shift. Therefore, our focus lies on applying the SPRAT model to investigate hypothesized drivers for the prolonged collapse and slow recovery of the benthic predator stocks on the Scotian Shelf.

2.3. Model parametrization

We use SPRAT to simulate the fish stock dynamics on the eastern Scotian Shelf from 1970 to 2010 with two fish species. One of these species represents the benthic predator complex and the other the forage fish complex. Initially, the fish in the model are distributed evenly in the space-size domain to achieve the biomass levels observed in 1970.

Space is assumed to be a homogeneous 450×450 km square, which roughly corresponds to the size of the continental shelf of NAFO divisions 4Vn,s and 4W (see Fig. 3). The spatial domain is equipped with periodic boundary conditions and is discretized into 48×48 equally-sized rectangular cells. The size dimension is divided into 32 cells using logarithmically distributed division points. On this regular mesh, we employ piecewise linear finite elements (P1 elements) to approximate the solution of the model with a mass-preserving flux-corrected transport (FCT) finite element method (FEM) solver (Brenner and Ridgway Scott, 2008; Kuzmin et al., 2012). We determined the resolution of the mesh to be sufficient by running a series of control simulations with increasingly finer discretizations. The refinement process was stopped once the difference in simulated aggregated stock biomasses ceased to change noticeably. For a visualization of the three-dimensional output produced by our model, see Fig. 8.

For the simulations we report on in this paper, SPRAT was not coupled with a fully-developed biogeochemical ocean model but instead used a simple NPZ model (summarized in Appendix A) to represent the lower trophic levels of the ecosystem. Since we neglect currents in our simulations, the state variables of the NPZ model do not have to be transported in space. Instead, we assign an instance of the NPZ model to every discrete spatial point of the mesh for approximating the solution of the SPRAT model and

compute the trophic interactions for each of these points in isolation. Note that we use only one set of parameters for all instances of the NPZ model.

The first step in the parametrization of SPRAT focuses on the parameters of the NPZ model. The aim is to achieve a periodically stable evolution of the NPZ state variables while the model is *not* coupled with the fish model (a constant predation pressure by fish on *Z* is assumed during parametrization of the NPZ model instead). Under these circumstances, the evolution of *N*, *P*, and *Z* should match observations that can, for example, be obtained from the NOAA World Ocean Database (Boyer et al., 2013). All concentrations were integrated vertically, assuming the mixed ocean layer to be 40 m deep. To fit the model to these observations, we first extracted an average value for cloud coverage C_c from the NASA Earth Observations Database¹ for our model region. The other parameters of the NPZ model were initially set to values obtained from Franks et al. (2001) and were then manually adjusted to the values given in Table B.4 in Appendix B in order to match the observations from the NOAA World Ocean Database. The NPZ model proved to be most sensitive to the parameters associated with nutrient uptake (V_m , k_s) and with grazing of phytoplankton (R_m , λ_s).

In Table B.5 in Appendix B, we list the values of the global parameters of the fish model. The minimal predator–prey mass ratio τ was estimated from FishBase (Froese and Pauly, 2016). The other two parameters, r_{view} and ζ_0 , were arbitrarily chosen by us since their values did not exhibit a strong influence on modeling results in our experiments. A radius of perfect information of $r_{\text{view}} = 100$ km together with $\zeta_0 = 1 \text{ kg}^{-1}$ leads to a balanced use of reactive and predictive movement strategies by the fish. The rather large radius of perfect information is a simplification that is justified by the fact that fish are able to learn information about their environment (cf. Brown et al., 2008).

Most species parameters of the fish model are directly observable and can be obtained from individual publications or from FishBase (Froese and Pauly, 2016), as seen in Table B.6 of Appendix B. We used *Gadus morhua* (Atlantic cod) and *Clupea harengus* (Atlantic herring) to represent the predator and forage fish complexes, respectively. Some parameters, however, were utilized to manually fit the model to the observed fish biomasses described in Section 2.2. These parameters, which are mostly related to foraging, are marked with an asterisk in Table B.6.

Some species parameters, such as the cruise speed or the beginning and end of the mating season, can only be measured with some uncertainty. To investigate how sensitive the model is to slight variations in these parameters, we ran several test simulations in which we altered the values of each of these variables in isolation and examined the effect on model output. For cruise speed ζ , slight variations (up to $\pm 20\%$) had only negligible influence on model results. The same is true for the mating season: as long as the mating seasons of the two fish complexes do not overlap, their placement throughout the year does not have a large influence on model results.

For the fishing mortality of the predator fish complex, we apply a linear interpolation of the observed fishing mortality reported by Frank et al. (2011) as shown in Fig. 6. We assume zero fishing mortality for the forage fish complex.

We found some disagreement in the literature between different published bottom water temperature anomaly series (especially between Frank et al. (2011) and Hebert and Pettipas (2013) as well as Zwanenburg et al. (2002)). Therefore, we reanalyzed temperature data from the Canadian Department of Fisheries and Oceans Oceanographic Database² to obtain the most

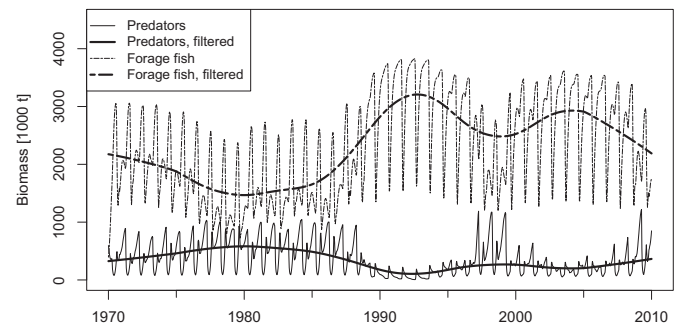


Fig. 9. Aggregated biomass for the predator and the forage fish complex of our reference simulation. The bold lines are the result of applying a 25% LOWESS filter to the data.

comprehensive and up-to-date time series for bottom water temperature anomaly $\Delta T(t)$. We filtered the raw data from the Oceanographic Database to acquire only temperature measurements that have been taken in the study area on the continental shelf east of Halifax, Nova Scotia in depths between 150 m and 250 m. To obtain yearly mean temperatures for this subset of the data, we fitted an analysis of variance (ANOVA) model with temperature as the response variable and year and month as the predictor variables to the data (for the modeling approach, cf. Worm and Myers, 2003). The resulting yearly mean temperatures minus the overall mean temperature are plotted as open circles in Fig. 7. $\Delta T(t)$ itself is defined as the linear interpolation of the five-year running means of these yearly temperature anomalies (this corresponds to the bold graph in Fig. 7). The resulting temperature anomaly is in agreement with data from individual observation stations on the eastern Scotian Shelf as reported by Hebert and Pettipas (2013) and Zwanenburg et al. (2002).

3. Results

As described in Section 2.2, three potential main drivers of the regime shift on the Scotian Shelf and its prolonged duration have been identified in the literature:

1. Intense fishing of benthic predators.
2. Predator–prey reversal.
3. Pronounced cooling of bottom waters.

With the SPRAT model, we explore the effect of each of these potential drivers by disabling the corresponding functionality in the model (e.g., by setting $\Delta T \equiv 0$) and comparing the resulting model output to a reference simulation. This reference simulation contains the full model functionality and uses the parametrization given in Section 2.3.

3.1. Reference simulation

In Fig. 9, we show the aggregated biomass of the predator and forage fish complexes of the reference simulation. Applying a 25% LOWESS filter to our results removes seasonal variation in fish biomass and allows us to compare the results from our reference simulation with observational data in Fig. 10.

Our model is able to qualitatively reproduce the shape of the observed biomass trajectories. However, predator biomass is overestimated prior to its collapse (although within the margin of error of the raw data) and underestimated at the beginning of the collapse. Additionally, the benthic predator biomass exhibits a small local maximum in the late 1990s that is not present in the Scotian Shelf observations but, interestingly, has been documented for nearby benthic predator stocks (e.g., for cod in the southern Gulf of

¹ http://neo.sci.gsfc.nasa.gov/view.php?datasetId=MODAL2_M_CLD_FR.

² <http://www.bio.gc.ca/science/data-donnees/base/index-en.php>.

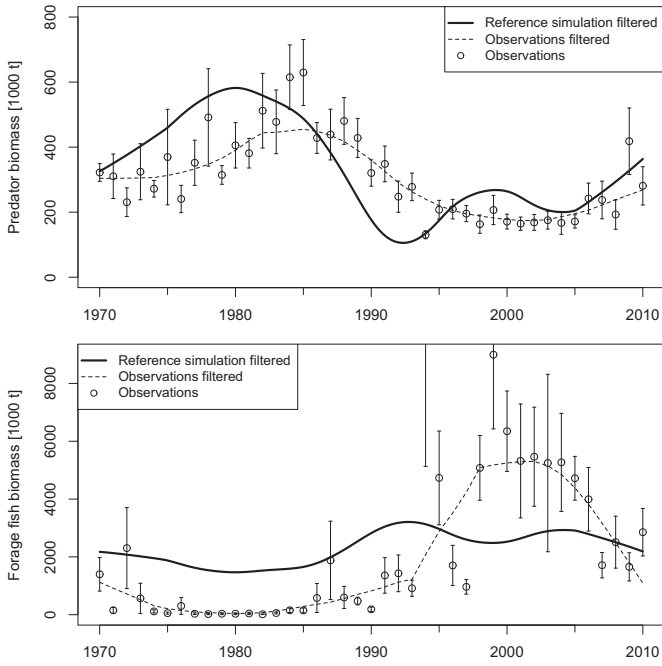


Fig. 10. Filtered biomass time series from our reference simulation in comparison with observations.

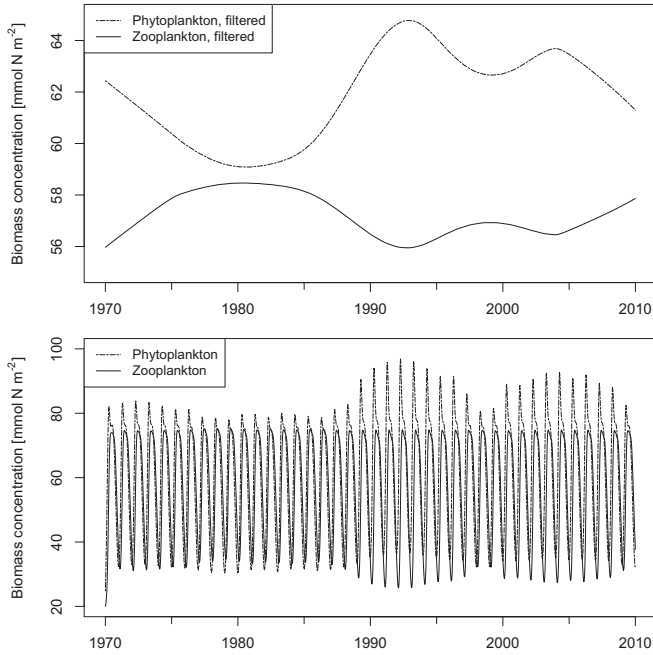


Fig. 11. Aggregated zooplankton and phytoplankton abundance in our reference simulation (top: 30% LOWESS filtered; bottom: raw data).

St. Lawrence as reported by Swain and Chouinard (2008)). The collapse of the benthic predators and the associated increase of forage fish biomass occurs a few years too early in our simulation. Forage fish biomass levels are significantly overestimated prior to the regime shift and underestimated during the shift (the model can only reproduce a doubling of forage fish biomass).

The observed shift in the plankton community from large-bodied zooplankton to a more phytoplankton-dominated regime is also present in the simulation data as can be seen in Fig. 11. A quantitative comparison of our results with the observations shown

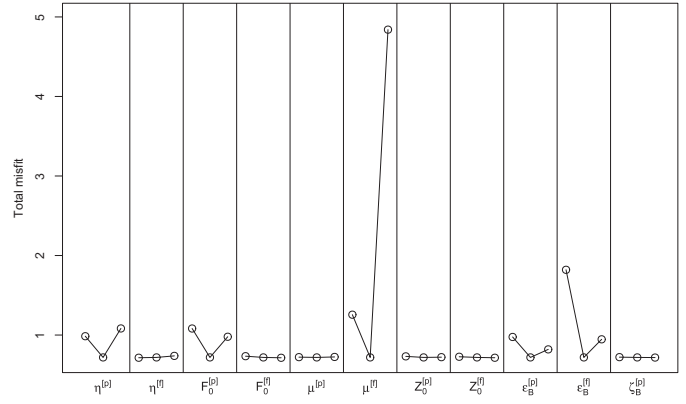


Fig. 12. Sensitivity of the total model misfit for the fish biomass time series to changes in several parameters. For each group of three values, the one in the center represents the reference simulation, the left one a simulation in which the respective parameter value is halved, and the right one a simulation in which the parameter value is doubled. The exponent [p] is for the predator complex and [f] is for the forage fish complex.

in Fig. 5 is not possible because our NPZ model does not resolve different zooplankton size classes.

3.2. Sensitivity analysis

To determine which model parameters have the greatest influence on model results, we conducted a coarse sweep of the parameter space. Based on the reference simulation, we run simulations in which we halve and double the values of selected parameters (those used for fitting the model; see Table B.6). For each of these simulations, we calculate the total misfit from fish biomass observations ε_{obs} via

$$\varepsilon_{\text{obs}} = \sqrt{\left(\varepsilon_{\text{obs}}^{[\text{pred}]}\right)^2 + \left(\varepsilon_{\text{obs}}^{[\text{forage}]}\right)^2} \quad \text{with} \quad (48)$$

$$\varepsilon_{\text{obs}}^{[\text{pred}]} = \frac{\|B_i^{[\text{pred}]} - B_{\text{obs}}^{[\text{pred}]}\|_{L_2, [0, t_{\text{max}}]}}{\|B_{\text{obs}}^{[\text{pred}]}\|_{L_2, [0, t_{\text{max}}]}} \quad \text{and} \quad (49)$$

$$\varepsilon_{\text{obs}}^{[\text{forage}]} = \frac{\|B_i^{[\text{forage}]} - B_{\text{obs}}^{[\text{forage}]}\|_{L_2, [0, t_{\text{max}}]}}{\|B_{\text{obs}}^{[\text{forage}]}\|_{L_2, [0, t_{\text{max}}]}} \quad (50)$$

where $B_{\text{obs}}^{[\kappa]}$ are the LOWESS filtered observed fish biomasses from Fig. 4.

In Fig. 12, we plot ε_{obs} for the simulations grouped by model parameter. The steeper the lines connecting the misfit values are, the more sensitive the model is to the respective parameter. While some model configurations exhibit a smaller error with respect to observations than our reference simulation, we did not select them as our reference because they fail to capture all qualitative features of the observed biomass curves.

Of the 11 parameters we ran sensitivity experiments for, the SPRAT model is most sensitive to $\mu^{[f]}$, which controls the rate at which the forage fish are feeding on zooplankton. It is followed by the parameters for the background mortality rate $\varepsilon_B^{[f]}$ and $\varepsilon_B^{[p]}$, to which the model is second and fifth most sensitive, respectively. In between these two parameters, on the third and fourth place, lie $\eta^{[p]}$ and $F_0^{[p]}$, which govern the predation process of the predator complex. To the remaining parameters that were tested, the model is comparably insensitive.

Table 1

Relative L_2 errors for the predator complex biomass and relative influence of the main drivers of the regime shift.

Scenario	ε_{L_2}	$\frac{\varepsilon_{L_2}}{\varepsilon_{L_2}(\Delta T=0)}$
$\Delta T \equiv 0$	0.478	1
$H_{\text{fish}} \equiv 0$	0.228	0.477
No pred.–prey reversal	0.183	0.383

3.3. Counterfactual simulations

In order to compare the effect size of the different hypothesized drivers of the regime shift on the Scotian Shelf, we report L_2 norm errors relative to the predator complex biomass of the reference simulation. For the aggregated predator complex biomass of the i th simulation

$$B_i^{\text{[pred]}}(t) = \int_{\Omega} m^{\text{[pred]}}(t, x, y, r) d(x, y, r) \tag{51}$$

and that of the reference simulation $B_r^{\text{[pred]}}(t)$, the relative L_2 error is given by

$$\varepsilon_{L_2} \left(B_i^{\text{[pred]}} \right) = \frac{\left\| B_i^{\text{[pred]}} - B_r^{\text{[pred]}} \right\|_{L_2, [0, t_{\text{max}}]}}{\left\| B_r^{\text{[pred]}} \right\|_{L_2, [0, t_{\text{max}}]}} \tag{52}$$

3.3.1. The influence of temperature

To analyze the influence of the bottom water temperature anomaly as a driver of the regime shift, we set $\Delta T \equiv 0$. This results in the biomass curves depicted in Fig. 13a and a relative L_2 error of $\varepsilon_{L_2} = 0.478$ as can be seen from Table 1. If we neglect the influence of the bottom water temperature anomaly, the regime shift is mostly non-present.

To explore whether we can induce the regime shift by fishing alone without considering the temperature anomaly, we set the fishing intensity for benthic predators to $F=20$ in 1992 (see Fig. 13b). However, even such an unrealistically high fishing pressure cannot introduce a persistent regime shift if we do not include the effects of bottom water temperature in our model.

3.3.2. The influence of fishing

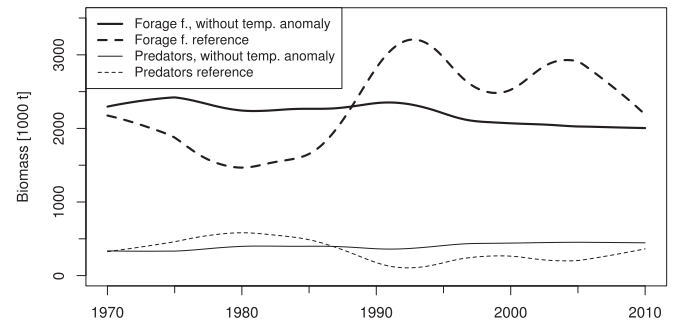
Setting $H_{\text{fish}} \equiv 0$ in our model results in overall higher predator biomass levels and lower forage fish levels (see Fig. 13c). However, the difference compared to the reference simulation becomes neglectable after about 1993 (the year of the fishing moratorium) and the regime shift is still clearly expressed. The relative L_2 error for this simulation is $\varepsilon_{L_2} = 0.228$, which is less than half of that of the scenario with $\Delta T \equiv 0$ (see Table 1).

3.3.3. The influence of predator–prey reversal

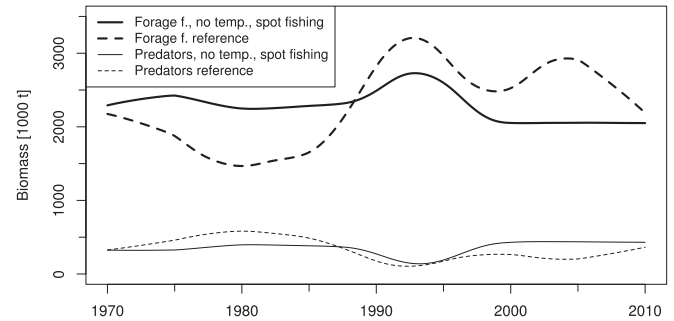
To disable the last potential driver of the regime shift (predator–prey reversal) in our model, we prevented forage fish from preying on predator juveniles with a wet mass of less than 120 g. As is apparent from Fig. 13d, this leads to a situation similar to the non-fishing scenario discussed above. The relative L_2 error of $\varepsilon_{L_2} = 0.183$ for the exclusion of predator–prey reversal is even smaller than for the no-fishing scenario and is only about 38% of the relative L_2 error of the $\Delta T \equiv 0$ scenario.

4. Discussion

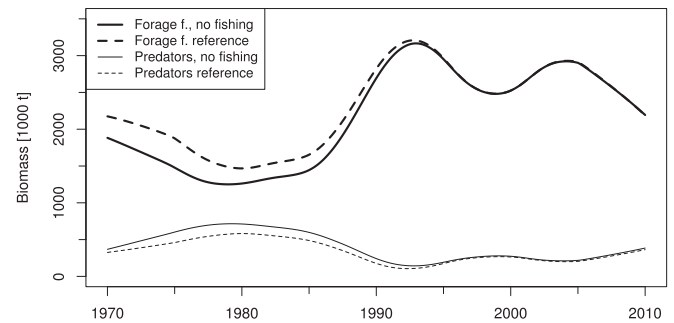
The observed dynamics of the eastern Scotian Shelf ecosystem are markedly complex, involving a rapid and lasting regime shift, a possible predator–prey reversal and non-recovery of a formerly dominant species. Given this complexity, the reasonable fit of our



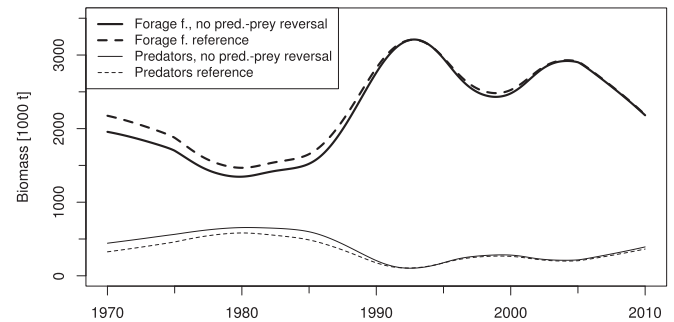
(a) Simulation with $\Delta T \equiv 0$.



(b) Simulation with $\Delta T \equiv 0$ and $F = 20$ in 1992



(c) Simulation with $H_{\text{fish}} \equiv 0$.



(d) Simulation without predator-prey reversal.

Fig. 13. Different simulations in comparison with the reference simulation.

reference simulation results (Section 3.1) with observed biomass trends may be viewed as more than satisfactory. The SPRAT model is able to reproduce all dynamic features that are present in the observational data, and the model fits the observed predator complex biomass data mostly within the margin of observational error. Since we are mainly interested in exploring possible causes of the regime shift, a more exact match of the observed forage fish biomass trajectory may not be fully relevant as long as its basic

shape is reproduced, and provided that the sensitivities of the modeled processes are simulated correctly. Note, however, that we simplify the complex structure of the Scotian Shelf ecosystem by taking into account only two fish species complexes, which places considerable constraints on the range of possible model outcomes and limits the predictive power of our model as discussed below.

4.1. Drivers of the fish stock dynamics

Our results indicate that modeling both species interactions and fishing, as well as environmental parameters, such as bottom water temperature anomaly, all play an important role in explaining the regime shift and the biomass fluctuations associated with it. Yet, their strength may vary considerably. In our set of simulations, and under the parameter values chosen here, the influence of ambient temperature on the benthic predator biomass dynamics was stronger than the influence of fishing and predator–prey reversal alone or in combination. If the observed bottom water temperature anomaly is ignored ($\Delta T \equiv 0$), the regime shift is not reproduced in our model. However, if either fishing or predator–prey reversal is disabled, the regime shift is still visible, if weakened.

Such an impact of temperature changes on biomass levels of cod is in broad agreement with empirical findings of Pershing et al. (2015), who show—for the Gulf of Maine—that sudden and rapid temperature changes can negatively affect cod recruitment success and increase mortality (observe however, that these events are not strictly comparable because the Gulf of Maine experienced a warming, the Scotian Shelf a cooling event). The comparably low impact of fishing on the biomass levels in our model, however, is in disagreement with the general observation that fish stocks react quite sensitively to changes in exploitation rates (Jennings and Kaiser, 1998). We therefore have to caution that the model likely overestimates the influence of temperature in comparison with fishing. A possible explanation for this is that ΔT directly affects the predation (and zooplankton grazing) rates (see Eqs. (38) and (41)), which are among the most sensitive model parameters (Section 3.2). The sensitivity of the model to the predation rates can, in turn, be explained by the fact that the modeled biomass levels of the fish stocks decline quite rapidly during winter (Fig. 9). In spring, the stocks have to regenerate by taking up the right amount of biomass. If predation and grazing rates are even only marginally too low, the stocks cannot regenerate (leading to a large model misfit). If predation and grazing rates are marginally too high, stock biomass overshoots (again, leading to a large model misfit). The rapid decline of modeled fish biomass in winter can be attributed to low levels of primary productivity (Fig. 11), which in effect deprive the fish of their food sources. In reality, however, stock biomass would not decrease that strongly because the fish might migrate further away from the shelf region to find subsidiary food sources (Sinclair and Iles, 1985). In our model, however, we (wrongly) assume a homogeneous space with no possibility of migrating out of the study area.

In conclusion, the dominant influence of temperature in comparison with fishing in our model can be traced back to a trade-off between model complexity (ignoring migration) and accuracy. In order to correct the relative influence of temperature in the model, one would either have to parametrize migration from and towards the study area or explicitly include areas with subsidiary food sources for the winter months into the modeled region.

Regardless of the possibly overemphasized role of ΔT , our modeling results support the hypothesis that the pronounced cooling of bottom waters may have played some role in the regime shift on the Scotian Shelf, most likely in combination with elevated fishing pressure, such as observed two decades later on the Gulf of Maine (Pershing et al., 2015). More generally, we might hypothesize that a complete restructuring of a marine ecosystem might often be

related to multiple causalities that act in synergy. If this hypothesis held true, fishing might play a key role in decimating stocks but these stocks would have to be weakened by other factors to induce a long-lasting collapse and associated long-term ecosystem effects.

Much of this interpretation, however, hinges on the particular temperature data that are used. As discussed in Section 2.3, we recalculated the bottom water temperature anomaly ΔT from raw data because of conflicting temperature series reported in the literature. The results of our recalculation (Fig. 7) agree with data for individual observation stations on the eastern Scotian Shelf as documented by Hebert and Pettipas (2013) and Zwanenburg et al. (2002). However, our results differ from the bottom water time series used by Frank et al. (2011) in that we observe a more pronounced and longer-lasting cooling effect in the early 1990s. If we force our model with the bottom water temperature data of Frank et al. (2011), the collapse of the predator fish complex is not reproduced in the model results. Therefore, the described differences between our temperature time series and the one by Frank et al. (2011) could explain why we find a stronger correlation of the bottom water temperature with benthic predator biomass.

4.2. Sensitivity analysis of the model

Above, we already discussed the sensitivity of SPRAT to predation and zooplankton grazing, specifically in the context of our analysis of the comparably large influence of ΔT . In this context, we would like to add that the well-defined maximum of zooplankton abundance (Fig. 11) can likely be explained by the density-dependent mortality included in our NPZ model (see Eq. (A.3) in Appendix A). As the zooplankton abundance approaches its maximum, its mortality increases quadratically until it offsets any positive zooplankton increase.

Regarding the results of the sensitivity experiments reported in Section 3.2 in general, we can observe that they seem to reflect the main trophic interactions one would expect to see in the eastern Scotian Shelf ecosystem. The main control mechanisms in the ecosystem are the bottom-up forcing of the availability of zooplankton to the planktivorous forage fish and the top-down control of predatory fish preying on the forage fish complex. Therefore, it seems plausible that, as we found in Section 3.2, parameters associated with these processes ($\mu^{[f]}$, $\eta^{[p]}$, and $F_0^{[p]}$) have a large effect on model results. We observe the strongest sensitivity for $\mu^{[f]}$ because it is essentially the only parameter that regulates the import of zooplankton biomass into the fish model (therefore, increasing $\mu^{[f]}$, dramatically increases overall fish biomass). The parameters $\mu^{[p]}$, $Z_0^{[p]}$, $\eta^{[f]}$, and $F_0^{[f]}$ exhibit only low sensitivity because the corresponding trophic interactions in the ecosystem are relatively weak. The only exception to this rule is $Z_0^{[f]}$ (zooplankton grazing half saturation for forage fish), which belongs to a strong trophic link but to which the model is not sensitive. A possible explanation is that zooplankton levels are in saturation with respect to $Z_0^{[f]}$ throughout most parts of the year (we choose $Z_0^{[f]}$ relatively small) and that the same is still true for half and twice the value of the parameter.

The high sensitivity of the model with respect to $\varepsilon_B^{[f]}$ and $\varepsilon_B^{[p]}$ is also related to their influence on (implicit) trophic links: they parametrize predation by birds and marine mammals, which is quite strong in the study area (Frank et al., 2011).

While we saw that the bottom water temperature anomaly ΔT has a large impact on model results, the SPRAT model is insensitive to $\zeta_B^{[p]}$ —the scaling constant of the ΔT -dependent predator juvenile mortality. This small impact of direct mortality due to ΔT supports our argument from above that the large overall effect size of the temperature anomaly is due to its influence on foraging processes.

5. Conclusions

With SPRAT, we introduced a spatially-explicit fish stock model for end-to-end modeling that is based on Population Balance Equations (PBEs). As such, our model offers an alternative to the IBMs and ADR-based fish stock models commonly employed in this domain. By utilizing PBEs, SPRAT can rely on the advanced mathematical theory of PDEs with its good integration with existing biogeochemical models while still being formulated from the perspective of the individual fish with a dynamic food web structure and, thus, combines the advantages of IBMs and ADR models.

With regard to the application of SPRAT on the Scotian Shelf, we have shown that our model is able to reproduce the complex direct and indirect dynamics of the two major fish groups on the eastern Scotian Shelf, while capturing at least qualitatively a last-ing regime shift that was observed there. Our results indicate that SPRAT is a promising tool for mechanistically exploring some of the processes that may be restructuring marine ecosystems and for exploring the possible effects of planned management interventions via ecosystem simulations. These efforts can, of course, only be a first step for the validation and improvement of our model. A promising but so far neglected direction for future research in this area is the empirical comparison of different fish stock models for end-to-end modeling by parametrizing the models for defined scenarios and comparing their outputs. This would allow us to evaluate how different design choices affect model predictions.

Concerning the empirical understanding of the regime shift in the Scotian Shelf ecosystem, our model highlights the hypothesis that a pronounced cooling of bottom waters might have been a necessary condition for the prolonged collapse of the cod stocks by making them more vulnerable to the effects of fishing and the last-ing impacts of a predator–prey reversal between cod and herring, as well as other forage fish. Our results emphasize the importance of taking into full consideration the complex interplay of different environmental drivers and their cumulative impacts on marine resources as well as their supporting ecosystems (cf. Britten et al., 2016; Pershing et al., 2015).

Acknowledgement

This work was supported by the Transatlantic Helmholtz Research School for Ocean System Science and Technology (www.hosst.org) and the excellence cluster Future Ocean (www.futureocean.org).

Appendix A. Summary of the NPZ model for the eastern Scotian Shelf

Our NPZ model contains only the three state variables given in Table A.2 and does not explicitly feature space. When coupling the NPZ model with the spatially-explicit SPRAT model, we assume—for computational simplicity—that there are no currents in the ocean and that no diffusion takes place. Therefore, we can assign an instance of the NPZ model to every discrete spatial point of the mesh for approximating the solution of the SPRAT model and compute the trophic interactions for each of these points

Table A.2
State variables of the NPZ model.

Symbol	Description	Unit
$N(t)$	Nutrients	mmol N m ⁻²
$P(t)$	Phytoplankton	mmol N m ⁻²
$Z(t)$	Zooplankton	mmol N m ⁻²

Table A.3
Functions and parameters of a general NPZ model.

Symbol	Description	Unit
$l(t)$	Daily integrated solar irradiance	MJ m ⁻²
$f(l)$	Phytoplankton response to irradiance	Dimensionless
$g(N)$	Phytoplankton nutrient uptake	s ⁻¹
$h(P)$	Zooplankton grazing rate	s ⁻¹
$i(P)$	Phytoplankton mortality rate	s ⁻¹
$j(Z)$	Zooplankton natural mortality rate	s ⁻¹
$r(N)$	Vertical nutrient transport rate	mmol N m ⁻² s ⁻¹
γ	Zooplankton assimilation efficiency	Dimensionless
$G(t)$	Plankton consumption rate by fish	mmol N m ⁻² s ⁻¹

in isolation. For converting between nitrogen concentrations and carbon mass concentrations, we use the conversion factor

$$\rho = 12 \times 10^{-6} \times \frac{106}{16} \frac{\text{kg C m}^{-2}}{\text{mmol N m}^{-2}}, \quad (\text{A.1})$$

which is based on the Redfield stoichiometric ratio for plankton (Redfield et al., 1966).

The general time-dependent dynamics of the three state variables are given by

$$\frac{dP}{dt} = f(l)g(N)P - h(P)Z - i(P)P, \quad (\text{A.2})$$

$$\frac{dZ}{dt} = \gamma h(P)Z - j(Z)Z - \frac{1}{\rho}G, \quad (\text{A.3})$$

$$\frac{dN}{dt} = -f(l)g(N)P + (1 - \gamma)h(P)Z \quad (\text{A.4})$$

$$+ i(P)P + j(Z)Z + r(N), \quad (\text{A.5})$$

where the meaning of the symbols is described in Table A.3. The transfer functions (f , g , h , i , j , r , and G) define the mass fluxes (expressed via nitrogen content) between the different compartments of the model.

The effect of light on the growth process is modeled via the saturating response function

$$f(l) = \frac{l}{l_s + l}, \quad (\text{A.6})$$

where l_s is the half saturation constant for the daily integrated irradiance available for photosynthesis l . We model the daily integrated solar irradiance according to Brock (1981). For calculating the amount of irradiance actually available for photosynthesis, we consider three attenuation factors:

1. Transmission losses: even without clouds, only a fraction of the radiation is actually transmitted from the top of the atmosphere through the surface of the ocean (we assume 75% to be transmitted; cf. Evans and Parslow, 1985).
2. Photosynthetically active radiation (PAR): phytoplankton can utilize only certain parts of the transmitted wavelength spectrum for photosynthesis (we assume 50% of the wavelength spectrum to be suitable for photosynthesis; cf. Fasham et al., 1990).
3. Cloud cover: clouds decrease the amount of radiation that reaches the ocean surface. For modeling this aspect, we follow Reed (1977), who derives the empirical relation

$$\frac{Q_C}{Q_0} = 1 - 0.62 \cdot C_c + \frac{0.342}{\pi} \cdot Z_1, \quad (\text{A.7})$$

where Q_C is the insolation under cloudy conditions, Q_0 the insolation under clear skies, C_c the percentage of cloud coverage, and Z_1 the solar altitude at noon (in radians).

Uptake of nutrients by phytoplankton is given by the Michaelis–Menten equation

$$g(N) = \frac{V_m N}{k_s + N} \quad (\text{A.8})$$

with V_m being the maximum uptake rate and k_s the half saturation constant for the available nutrients.

The rate of phytoplankton consumption by zooplankton is given via Ivlev's functional response

$$h(P) = R_m(1 - \exp(-\lambda_s P)), \quad (\text{A.9})$$

where R_m is the maximum phytoplankton uptake rate and λ_s —the Ivlev constant—influences how fast saturation is achieved. The actual fraction of phytoplankton that is incorporated into the zooplankton biomass is influenced by the assimilation efficiency γ . The remaining part $((1 - \gamma)h(P)Z)$ is excreted and, therefore, added to the nutrient pool again.

Phytoplankton mortality is modeled via the quadratic density-dependent mortality rate

$$i(P) = \varepsilon_P P. \quad (\text{A.10})$$

For zooplankton, we define two mortality rates: first, a quadratic rate

$$j(Z) = \varepsilon_Z Z \quad (\text{A.11})$$

that is directly applied in the model in Eq. (A.3). Second, a linear rate

$$j_f(Z) = \varepsilon_f \quad (\text{A.12})$$

that is used to limit the amount of zooplankton consumed by fish G .

For reasons of simplicity and model stability, we do not explicitly describe the vertical transport of water and remineralization processes associated with this transport but parametrize them via

$$r(N) = \eta_r(N_m - N), \quad (\text{A.13})$$

where η_r sets the speed of remineralization and N_m is the maximum nutrient concentration. The functional form of $r(N)$ mimics diffusion processes by assuming a constant nutrient concentration N_m outside the region covered by the NPZ model (e.g., in the deep ocean). Depending on whether N is below or above N_m in the model, nutrients diffuse into or out of the model region at a rate depending on the concentration difference.

Appendix B. Parameter values

In Tables B.4, B.5, and B.6, we list the parameter values for our NPZ model and the SPRAT model.

Table B.4
Parametrization of our NPZ model for the eastern Scotian Shelf.

Symbol	Description	Value
γ	Zooplankton assimilation efficiency	0.7
ι_s	Half saturation irradiance	5 MJ m ⁻²
V_m	Uptake rate of nutrients	0.15 d ⁻¹
k_s	Half saturation nutrients	30 mmol N m ⁻²
R_m	Uptake rate of phytoplankton	0.5 d ⁻¹
λ_s	Ivlev constant for grazing	$\frac{1}{600} (\text{mmol N})^{-1} \text{m}^2$
ε_P	Mortality rate phytoplankton	$3.75 \times 10^{-4} (\text{mmol N})^{-1} \text{m}^2 \text{d}^{-1}$
ε_Z	Mortality rate zooplankton	$5 \times 10^{-4} (\text{mmol N})^{-1} \text{m}^2 \text{d}^{-1}$
ε_f	Zooplankton mortality due to grazing	0.075 d ⁻¹
η_r	Remineralization rate	24 year ⁻¹
N_m	Maximum nutrient concentration	170 mmol N m ⁻²
C_c	Cloud coverage	0.7

Table B.5
Parametrization of SPRAT for the eastern Scotian Shelf (global parameters).

Symbol	Description	Value
τ	Minimal predator–prey mass ratio	8
r_{view}	Perfect information radius (Eq. (7))	10 ⁵ m
ζ_0	Scaling for feeding migration threshold (Eq. (13))	1 kg ⁻¹

Table B.6
Parametrization of SPRAT for the eastern Scotian Shelf (species parameters).

Symbol	Description	Unit	Pred.	Forage	Source
$C_{C/d}$	Carbon to dry mass ratio	d.u.	0.5	0.5	Watson et al. (2014)
$C_{d/w}$	Dry to wet mass ratio	d.u.	0.25	0.25	Watson et al. (2014)
w_{egg}	Egg dry mass	kg	7×10^{-8}	1.4×10^{-7}	Ouellet et al. (2001), Hempel and Blaxter (1967)
w_{forage}	Min. forage dry mass	kg	1.2×10^{-7}	2.43×10^{-7}	Ouellet et al. (2001), Hempel and Blaxter (1967)
M_{plankton}	Max. Z consumption wet mass	kg	0.05	r_{max}	Jobling (1981)
M_{mature}	Wet mass at maturity	kg	1.2	0.173	Froese and Pauly (2016)
M_{max}	Maximum wet mass	kg	14.5	0.732	Froese and Pauly (2016)
a	a for L – W relationship	d.u.	7.9×10^{-3}	6.9×10^{-3}	Froese and Pauly (2016)
b	b for L – W relationship	d.u.	3.05	3.04	Froese and Pauly (2016)
ζ	Cruise speed	BL s ⁻¹	0.6	0.8	Videler and Wardle (1991)
S	Mating season	n.a.	$\left[\frac{2}{12}, \frac{5}{12} \right]$	$\left[\frac{7}{12}, \frac{8.3}{12} \right]$	Froese and Pauly (2016)
θ_{yolk}	Duration till w_{forage}	s	2.85×10^6	2.85×10^6	Froese and Pauly (2016)
E	Assimilation efficiency	d.u.	0.8	0.8	Simenstad and Cailliet (1986)
ε_B	Background mortality rate	m ² s ⁻¹	1.47×10^{-4}	7.35×10^{-5}	*
ζ_B	Scaling of temperature mortality	s ⁻¹ °C ⁻¹	5	0	*
ϕ	Net wet mass fecundity	kg ⁻¹	1.3×10^6	4×10^5	Froese and Pauly (2016)
η	Predation rate	s ⁻¹	10^{-5}	10^{-5}	*
F_0	Predation half sat.	kg m ⁻²	0.05	0.01	*
μ	Zooplankton grazing rate	s ⁻¹	5.1×10^{-8}	5.5×10^{-8}	*
Z_0	Zooplankton grazing half sat.	kg m ⁻²	5×10^{-5}	5×10^{-5}	*

References

- Andersen, K.H., Beyer, J.E., 2006. Asymptotic size determines species abundance in the marine size spectrum. *Am. Nat.* 168 (1), 54–61.
- Bertignac, M., Lehodey, P., Hampton, J., 1998. A spatial population dynamics simulation model of tropical tunas using a habitat index based on environmental parameters. *Fish. Oceanogr.* 7 (3–4), 326–334.
- Boisclair, D., Tang, M., 1993. Empirical analysis of the influence of swimming pattern on the net energetic cost of swimming in fishes. *J. Fish Biol.* 42 (2), 169–183.
- Boyer, T.P., Antonov, J.I., Baranova, O.K., Garcia, H.E., Johnson, D.R., Mishonov, A.V., O'Brien, T.D., Seidov, D., Smolyar, I., Zweng, M.M., et al., 2013. *World Ocean Database 2013*. NOAA.
- Brander, K.M., 2007. Global fish production and climate change. *Proc. Natl. Acad. Sci. U.S.A.* 104 (50), 19709–19714.
- Brenner, S., Ridgway Scott, L., 2008. *The Mathematical Theory of Finite Element Methods*, 3rd ed. Springer.
- Britten, G.L., Dowd, M., Worm, B., 2016. Changing recruitment capacity in global fish stocks. *Proc. Natl. Acad. Sci. U.S.A.* 113 (1), 134–139.
- Brock, T.D., 1981. Calculating solar radiation for ecological studies. *Ecol. Modell.* 14 (1), 1–19.
- Brown, C., Laland, K., Krause, J., 2008. *Fish Cognition and Behavior*. John Wiley & Sons.
- Bundy, A., 2005. Structure and functioning of the eastern Scotian shelf ecosystem before and after the collapse of groundfish stocks in the early 1990. *Can. J. Fish. Aquat. Sci.* 62 (7), 1453–1473.
- Carozza, D.A., Bianchi, D., Galbraith, E.D., 2016. The ecological module of BOATS-1.0: a bioenergetically constrained model of marine upper trophic levels suitable for studies of fisheries and ocean biogeochemistry. *Geosci. Model Dev.* 9 (4), 1545–1565.
- Christensen, V., Walters, C.J., Pauly, D., 2005. *Ecopath with Ecosim: A User's Guide*. Technical Report. Fisheries Centre, University of British Columbia, Vancouver.

- Clarke, A., Johnston, N.M., 1999. Scaling of metabolic rate with body mass and temperature in teleost fish. *J. Anim. Ecol.* 68 (5), 893–905.
- Collie, J., Minto, C., Worm, B., Bell, R., 2013. Predation on prerecruits can delay rebuilding of depleted cod stocks. *Bull. Mar. Sci.* 89 (1), 107–122.
- Costello, C., Ovando, D., Clavelle, T., Kent Strauss, C., Hilborn, R., Melnychuk, M.C., Branch, T.A., Gaines, S.D., Szuwalski, C.S., Cabral, R.B., Raderb, D.N., Lelandb, A., 2016. Global fishery prospects under contrasting management regimes. *Proc. Natl. Acad. Sci. U.S.A.* 113 (18), 5125–5129.
- Curry, P., Shin, Y.-J., Planque, B., Durant, J.M., Fromentin, J.-M., Kramer-Schadt, S., Stenseth, N.C., Travers, M., Grimm, V., 2008. Ecosystem oceanography for global change in fisheries. *Trends Ecol. Evol.* 23 (6), 338–346.
- Evans, G.T., Parslow, J.S., 1985. A model of annual plankton cycles. *Biol. Oceanogr.* 3 (3), 327–347.
- Fasham, M.J.R., Ducklow, H.W., McKelvie, S.M., 1990. A nitrogen-based model of plankton dynamics in the oceanic mixed layer. *J. Mar. Res.* 48 (3), 591–639.
- Fernö, A., Pitcher, T.J., Melle, W., Nøttestad, L., Mackinson, S., Hollingworth, C., Misund, O.A., 1998. The challenge of the herring in the Norwegian sea: making optimal collective spatial decisions. *Sarsia* 83 (2), 149–167.
- Frank, K.T., Petrie, B., Choi, J.S., Leggett, W.C., 2005. Trophic cascades in a formerly cod-dominated ecosystem. *Science* 308 (5728), 1621–1623.
- Frank, K.T., Petrie, B., Fisher, J.A.D., Leggett, W.C., 2011. Transient dynamics of an altered large marine ecosystem. *Nature* 477 (7362), 86–89.
- Franks, P.J.S., Chen, C., 2001. A 3-d prognostic numerical model study of the Georges bank ecosystem. Part II: biological–physical model. *Deep Sea Res. Part II: Top. Stud. Oceanogr.* 48 (1), 457–482.
- Froese, R., Pauly, D., 2016. Fishbase. <http://www.fishbase.org/>.
- Fulton, E.A., Link, J.S., Kaplan, I.C., Savina-Rolland, M., Johnson, P., Ainsworth, C., Horne, P., Gorton, R., Gamble, R.J., Smith, A.D.M., Smith, D.C., 2011. Lessons in modelling and management of marine ecosystems: the Atlantis experience. *Fish. Fish.* 12 (2), 171–188.
- Grimm, V., Berger, U., Bastiansen, F., Eliassen, S., Ginot, V., Giske, J., Goss-Custard, J., Grand, T., Heinz, S.K., Huse, G., et al., 2006. A standard protocol for describing individual-based and agent-based models. *Ecol. Modell.* 198 (1), 115–126.
- Hebert, D., Pettipas, R.G., 2014. Physical Oceanographic Conditions on the Scotian Shelf and in the Eastern Gulf of Maine (NAFO Areas 4V,W,X) During 2013. Technical Report. NAFO.
- Hempel, G., Blaxter, J.H.S., 1967. Egg weight in Atlantic herring (*Clupea harengus* L.). *J. Conseil* 31 (2), 170–195.
- Houde, E.D., 2009. Recruitment variability. In: Jakobsen, T., Fogarty, M.J., Megrey, B.A., Moksness, E. (Eds.), *Fish Reproductive Biology: Implications for Assessment and Management*. Wiley, pp. 91–171.
- Jennings, S., Kaiser, M.J., 1998. The effects of fishing on marine ecosystems. *Adv. Mar. Biol.* 34, 201–352.
- Jobling, M., 1981. Mathematical models of gastric emptying and the estimation of daily rates of food consumption for fish. *J. Fish Biol.* 19 (3), 245–257.
- Johanson, A.N., 2016. Model-Driven Software Engineering for Computational Science Applied to a Marine Ecosystem Model (Ph.D. thesis). Kiel University http://macau.uni-kiel.de/receive/dissertation_diss.00018467.
- Johanson, A.N., Hasselbring, W., 2014a. Hierarchical combination of internal and external domain-specific languages for scientific computing. In: *Proceedings of the 2014 European Conference on Software Architecture Workshops, ECSAW'14*. ACM, pp. 17:1–17:8.
- Johanson, A.N., Hasselbring, W., 2014b. Sprat hierarchies of domain-specific languages for marine ecosystem simulation engineering. In: *Proceedings TMS SpringSim'14*, SCS, pp. 187–192.
- Johanson, A.N., Hasselbring, W., Oschlies, A., Worm, B., 2016. Evaluating hierarchical domain-specific languages for computational science: applying the Sprat approach to a marine ecosystem model. In: Carver, J., Hong, N.P.C., Thiruvathukal, G.K. (Eds.), *Software Engineering for Science*. Chapman and Hall.
- Kuzmin, D., Löhner, R., Turek, S., 2012. Flux-Corrected Transport: Principles, Algorithms, and Applications. Scientific Computation. Scientific Computation, 2nd ed. Springer.
- Le Borne, S., Shahmuradyan, L., 2016. Algorithms for the Haar wavelet based fast evaluation of aggregation integrals in population balance equations. *Appl. Numer. Math.* 108, 1–20.
- Lehodey, P., Senina, I., Calmettes, B., Hampton, J., Nicol, S., 2013. Modelling the impact of climate change on Pacific skipjack tuna population and fisheries. *Clim. Change* 119 (1), 95–109.
- Maury, O., 2010. An overview of APECOSM, a spatialized mass balanced “Apex Predators ECOSystem Model” to study physiologically structured tuna population dynamics in their ecosystem. *Prog. Oceanogr.* 84 (1), 113–117.
- Maury, O., Poggiale, J.-C., 2013. From individuals to populations to communities: a dynamic energy budget model of marine ecosystem size-spectrum including life history diversity. *J. Theoret. Biol.* 324, 52–71.
- Megrey, B.A., Rose, K.A., Klumb, R.A., Hay, D.E., Werner, F.E., Eslinger, D.L., Lan Smith, S., 2007. A bioenergetics-based population dynamics model of Pacific herring (*Clupea harengus pallasii*) coupled to a lower trophic level nutrient-phytoplankton-zooplankton model: description, calibration, and sensitivity analysis. *Ecol. Modell.* 202 (1), 144–164.
- Minto, C., Worm, B., 2012. Interactions between small pelagic fish and young cod across the north Atlantic. *Ecology* 93 (10), 2139–2154.
- Moloney, C.L., St. John, M.A., Denman, K.L., Karl, D.M., Köster, F.W., Sundby, S., Wilson, R.P., 2011. Weaving marine food webs from end to end under global change. *J. Mar. Syst.* 84 (3), 106–116.
- Neill, W.H., 1979. Mechanisms of fish distribution in heterothermal environments. *Am. Zool.* 19 (1), 305–317.
- Ohlberger, J., Staaks, G., van Dijk, P.L.M., Hölker, F., 2005. Modelling energetic costs of fish swimming. *J. Exp. Zool. Part A: Comp. Exp. Biol.* 303 (8), 657–664.
- Ouellet, P., Lambert, Y., Bérubé, I., 2001. Cod egg characteristics and viability in relation to low temperature and maternal nutritional condition. *ICES J. Mar. Sci.* 58 (3), 672–686.
- Pershing, A.J., Alexander, M.A., Hernandez, C.M., Kerr, L.A., Le Bris, A., Mills, K.E., Nye, J.A., Record, N.R., Scannell, H.A., Scott, J.D., Sherwood, G.d., Thomas, A.C., 2015. Slow adaptation in the face of rapid warming leads to collapse of the Gulf of Maine cod. *Fish. Sci.* 350 (6262), 809–812.
- Radtke, H., Neumann, T., Fennel, W., 2013. A Eulerian nutrient to fish model of the Baltic sea – a feasibility-study. *J. Mar. Syst.* 125, 61–76.
- Ramkrishna, D., 2000. *Population Balances: Theory and Applications to Particulate Systems in Engineering*. Academic Press.
- Redfield, A.C., Ketchum, B.H., Richards, F.A., 1966. The influence of organisms on the composition of sea-water. In: Hill, M.N. (Ed.), *The Sea*. Wiley, pp. 26–77.
- Reed, R.K., 1977. On estimating insolation over the ocean. *J. Phys. Oceanogr.* 7 (3), 482–485.
- Rose, K.A., Icarus Allen, J., Artioli, Y., Barange, M., Blackford, J., Carlotti, F., Cropp, R., Daewel, U., Edwards, K., Flynn, K., et al., 2010. End-to-end models for the analysis of marine ecosystems: challenges, issues, and next steps. *Mar. Coast. Fish.* 2 (1), 115–130.
- Scheffer, M., Bavaco, J.M., DeAngelis, D.L., Rose, K.A., van Nes, E.H., 1995. Super-individuals a simple solution for modelling large populations on an individual basis. *Ecol. Modell.* 80 (2), 161–170, pp. 26–77.
- Shin, Y.-J., Curry, P., 2001. Exploring fish community dynamics through size-dependent trophic interactions using a spatialized individual-based model. *Aquat. Living Resour.* 14 (2), 65–80.
- Shin, Y.-J., Travers, M., Maury, O., 2010. Coupling low and high trophic levels models: towards a pathways-orientated approach for end-to-end models. *Prog. Oceanogr.* 84 (1), 105–112.
- Simenstad, C.A., Cailliet, G.M., 1986. *Contemporary Studies on Fish Feeding*. Kluwer.
- Sinclair, M., Iles, T.D., 1985. Atlantic herring (*Clupea harengus*) distributions in the Gulf of Maine – Scotian Shelf area in relation to oceanographic features. *Can. J. Fish. Aquat. Sci.* 42 (5), 880–887.
- Stock, C.A., Alexander, M.A., Bond, N.A., Brander, K.M., Cheung, W.W.L., Curchitser, E.N., Delworth, T.L., Dunne, J.P., Griffies, S.M., Haltuch, M.A., Hare, J.A., Hollowed, A.B., Lehodey, P., Levin, S.A., Link, J.S., Rose, K.A., Rykaczewski, R.R., Sarmiento, J.L., Stouffer, R.J., Schwing, F.B., Vecchi, G.A., Werner, F.E., 2011. On the use of IPCC-class models to assess the impact of climate on living marine resources. *Prog. Oceanogr.* 88 (1), 1–27.
- Stramma, L., Prince, E.D., Schmidtko, S., Luo, J., Hoolihan, J.P., Visbeck, M., Wallace, D.W.R., Brandt, P., Körtzinger, A., 2012. Expansion of oxygen minimum zones may reduce available habitat for tropical pelagic fishes. *Nat. Clim. Change* 2 (1), 33–37.
- Swain, D.P., Chouinard, G.A., 2008. Predicted extirpation of the dominant demersal fish in a large marine ecosystem: Atlantic cod (*Gadus morhua*) in the southern Gulf of St. Lawrence. *Can. J. Fish. Aquat. Sci.* 65 (11), 2315–2319.
- Travers, M., Shin, Y.-J., Jennings, S., Curry, P., 2007. Towards end-to-end models for investigating the effects of climate and fishing in marine ecosystems. *Prog. Oceanogr.* 75 (4), 751–770.
- Videler, J.J., 1993. *Fish Swimming*, vol. 10 of Fish and Fisheries Series. Chapman & Hall.
- Videler, J.J., Wardle, C.S., 1991. Fish swimming stride by stride: speed limits and endurance. *Rev. Fish Biol. Fish.* 1 (1), 23–40.
- Ware, D.M., 1978. Bioenergetics of pelagic fish: theoretical change in swimming speed and ration with body size. *J. Fish. Board Canada* 35 (2), 220–228.
- Watson, R., Zeller, D., Pauly, D., 2014. Primary productivity demands of global fishing fleets. *Fish. Fish.* 15 (2), 231–241.
- Worm, B., Myers, R.A., 2003. Meta-analysis of cod-shrimp interactions reveals top-down control in oceanic food webs. *Ecology* 84 (1), 162–173.
- Worm, B., Hilborn, R., Baum, J.K., Branch, T.A., Collie, J.S., Costello, C., Fogarty, M.J., Fulton, E.A., Hutchings, J.A., Jennings, S., et al., 2009. Rebuilding global fisheries. *Science* 325 (5940), 578–585.
- Zwanenburg, K.C.T., Bowen, D., Bundy, A., Frank, K., Drinkwater, K., O’Boyle, R., Sameoto, D., Sinclair, M., 2002. Decadal changes in the Scotian shelf large marine ecosystem. *Large Mar. Ecosyst.* 10, 105–150.